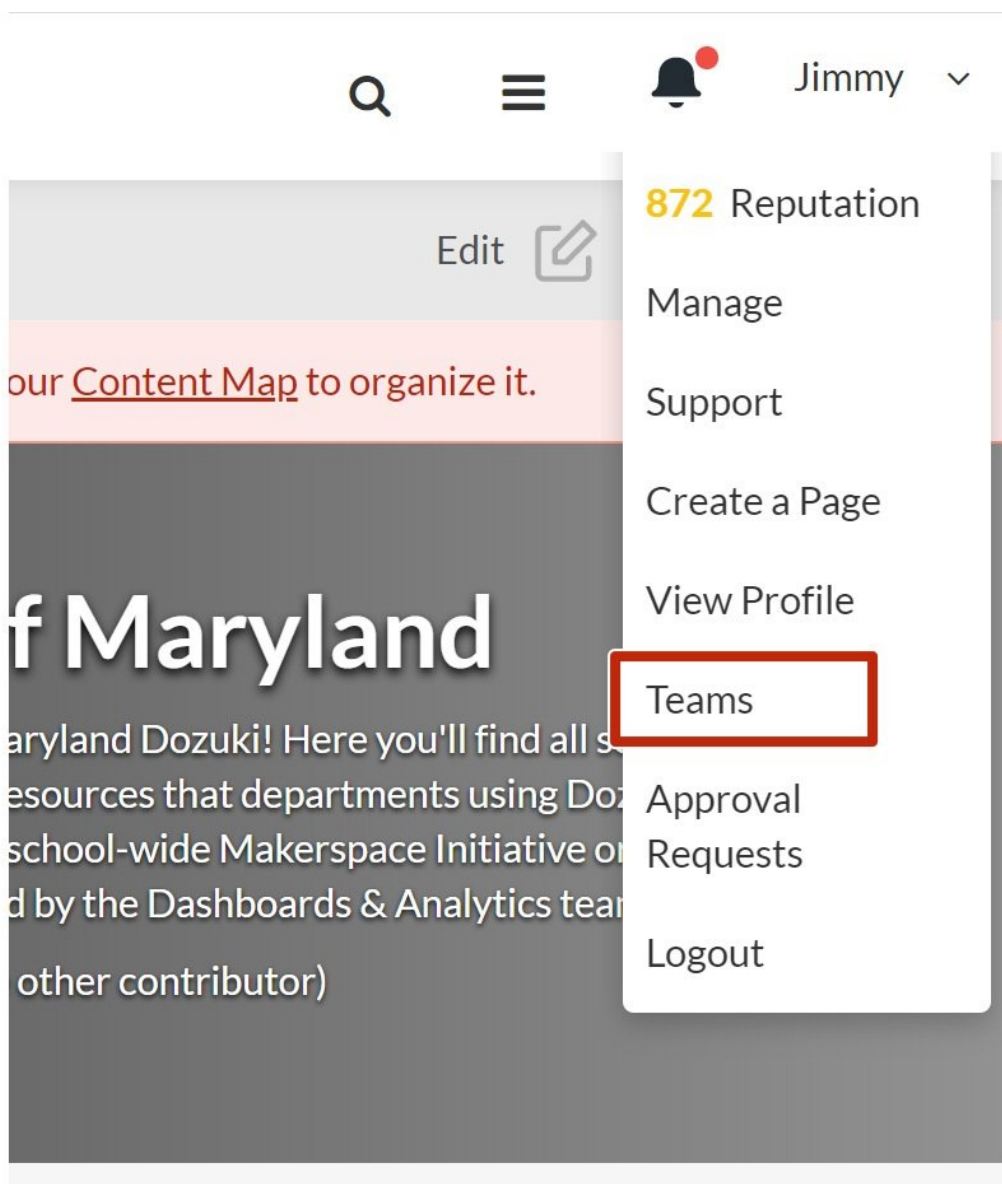




Make Teams, Courses, and Approvals

This guide will show how to create teams in Dozuki.

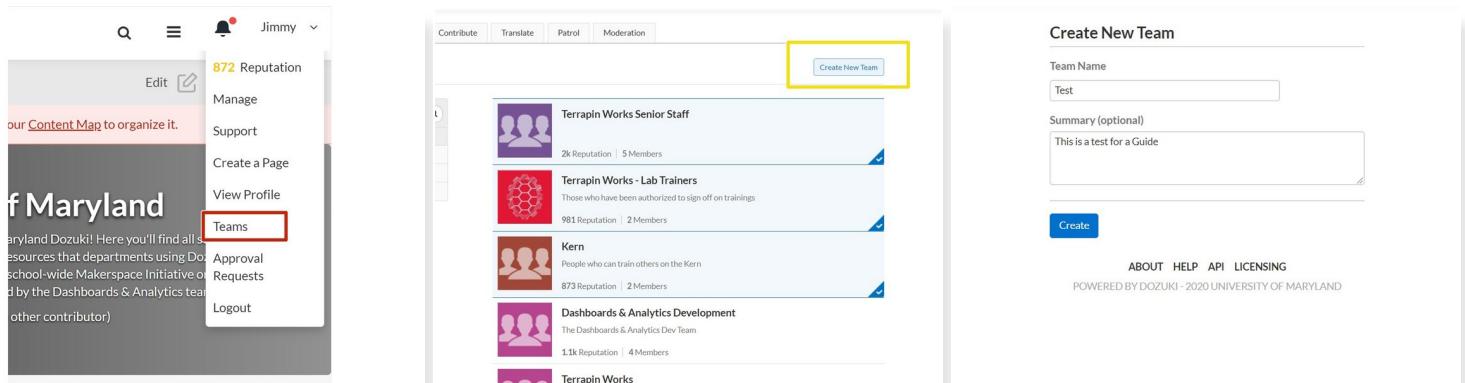
Written By: Jimmy Nolan



Introduction

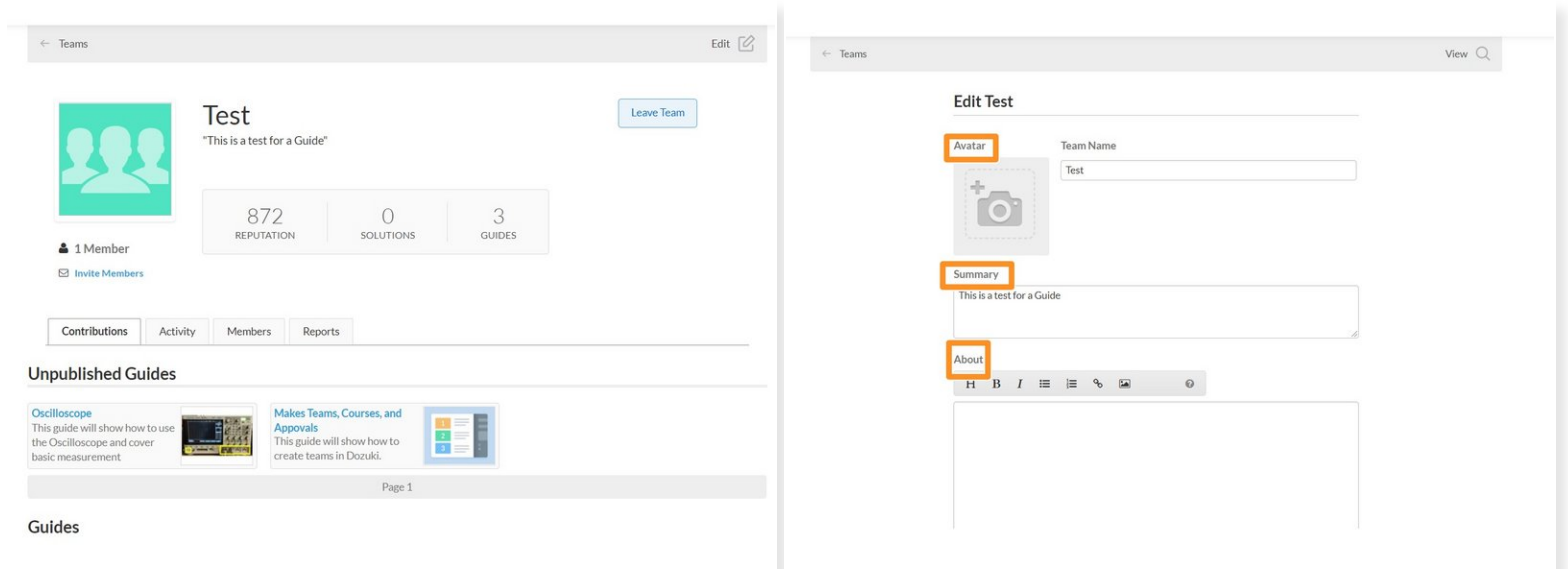
This is a guide that aims to show people how to create teams to separate user by lab or machine. Then it shows how to add approvals and sign-offs in guides, then finishes off by how to create courses, add guides, and assign people to them. By the end of this guide people should have a good idea how to integrate training programs such as on-boarding manuals into Dozuki.

Step 1 — Create Teams



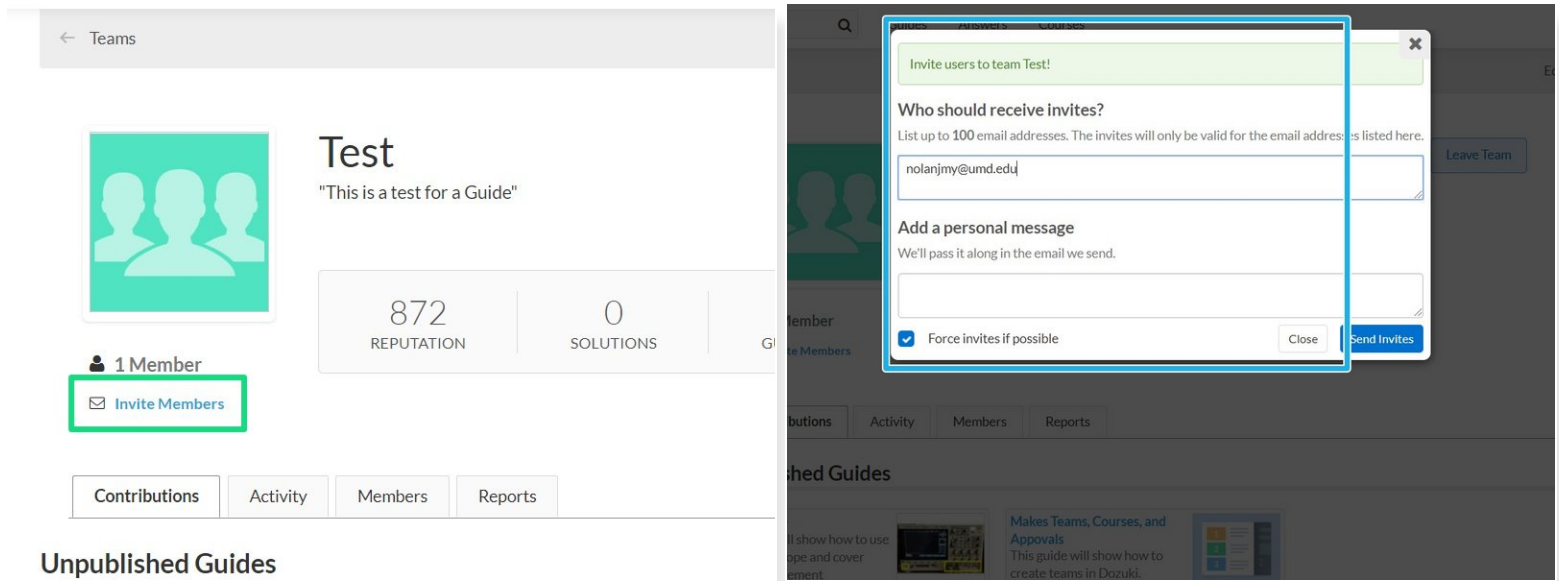
- Click on your name and go to teams page
- Click create new teams
- Enter the team info such as name and a brief description

Step 2 — Edit Teams



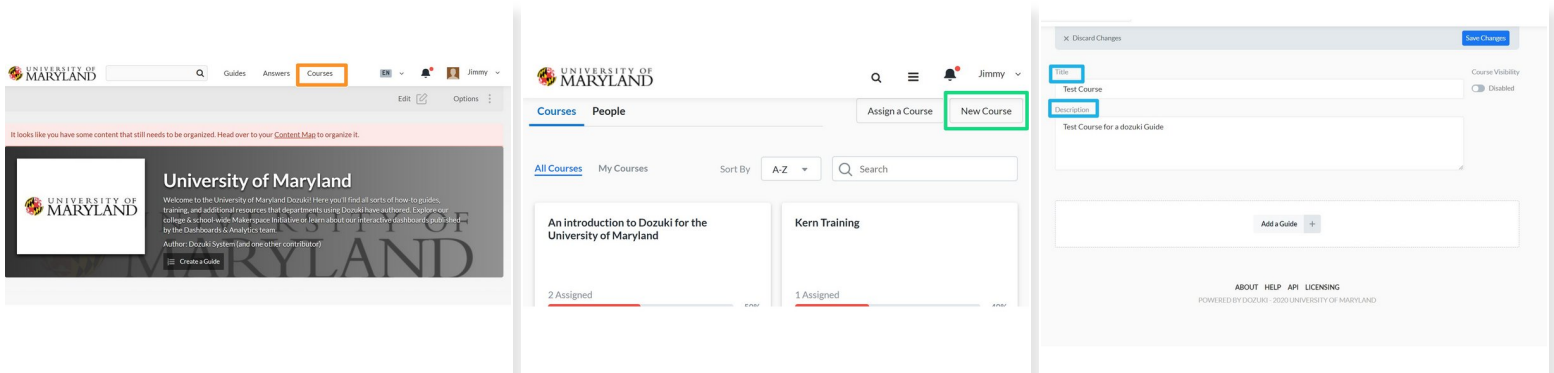
- The first picture shows what teams look like from an admin view
- Click edit to start editing
- The screen in the second picture will appear
- You can add pictures and descriptions to your team

Step 3 — Add members to your team



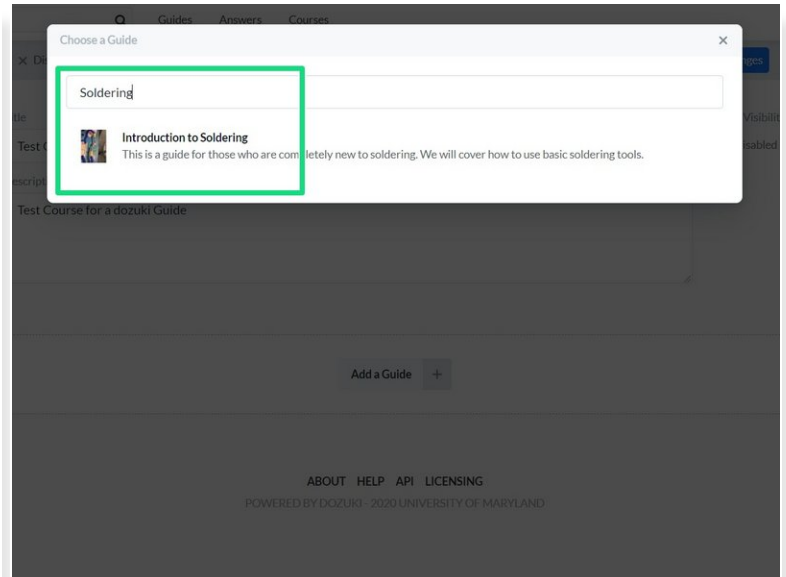
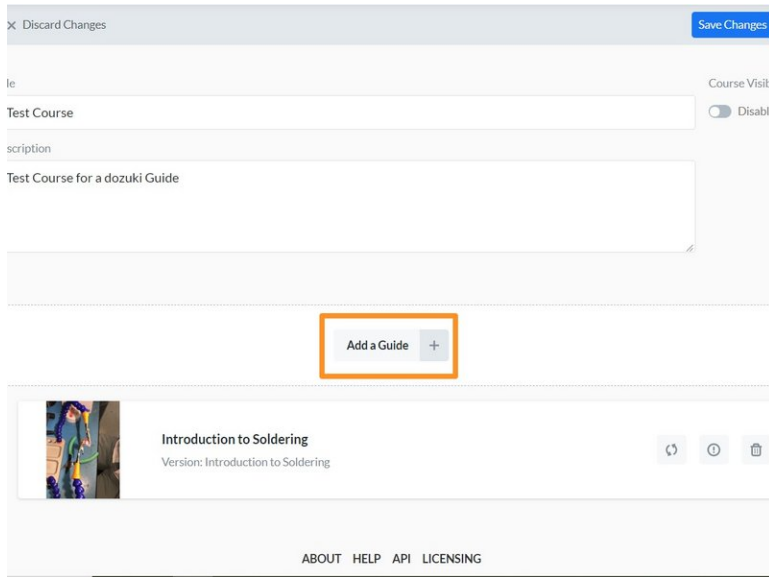
- After the team is set up, add users to it by clicking invite members
- The following screen will pop up where you can invite people
 - ❗ You can also ask people to join a team rather than sending an invite, but an invite will automatically add someone

Step 4 — Creating a course



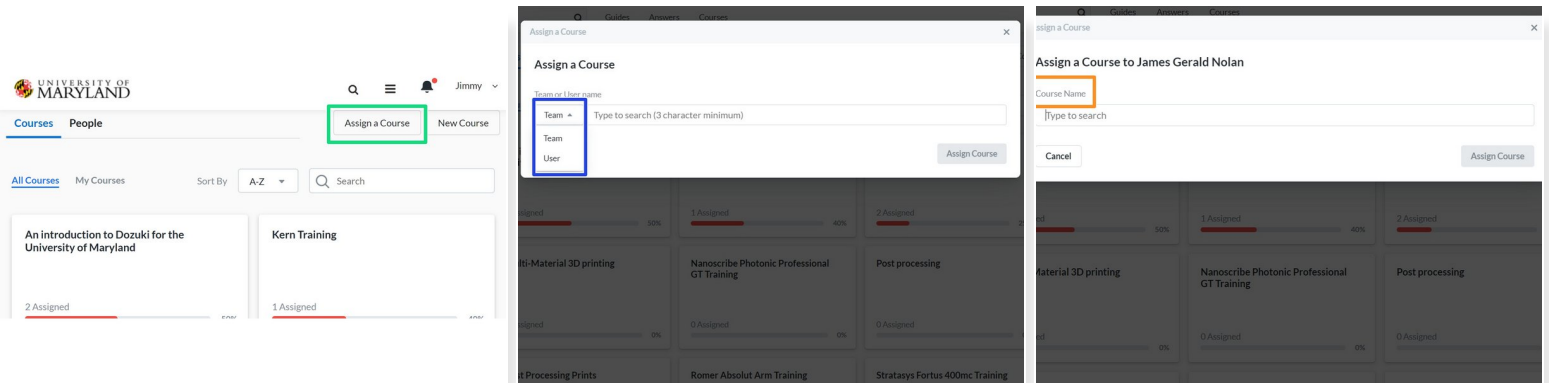
- Click on courses
- Click new course
- Enter Course Info

Step 5 — Adding Guides to a course



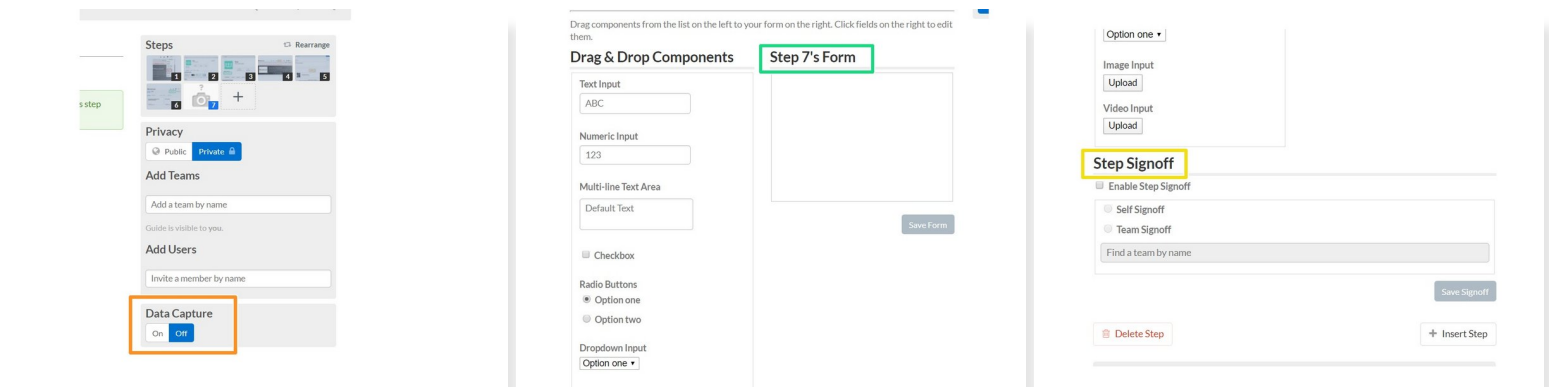
- Guides can be added at any time to a course
- When creating a course just select add guide
- Type the guide name in
- ⚠️ **Guides must be public to add to a course**
- ❗ If they aren't it will not show up when searching for it


Step 6 — Assigning People



- Individual people or whole teams can be added to a course
- In the courses home page select assign a course
- Select individual or team
- Then select course

Step 7 — Add sign off to guides



- First turn on data capture
- The following form should show up below the step
- Scroll down and Select Team sign off and select the team you want
-  This will restrict a sign off to someone on the team that is selected

