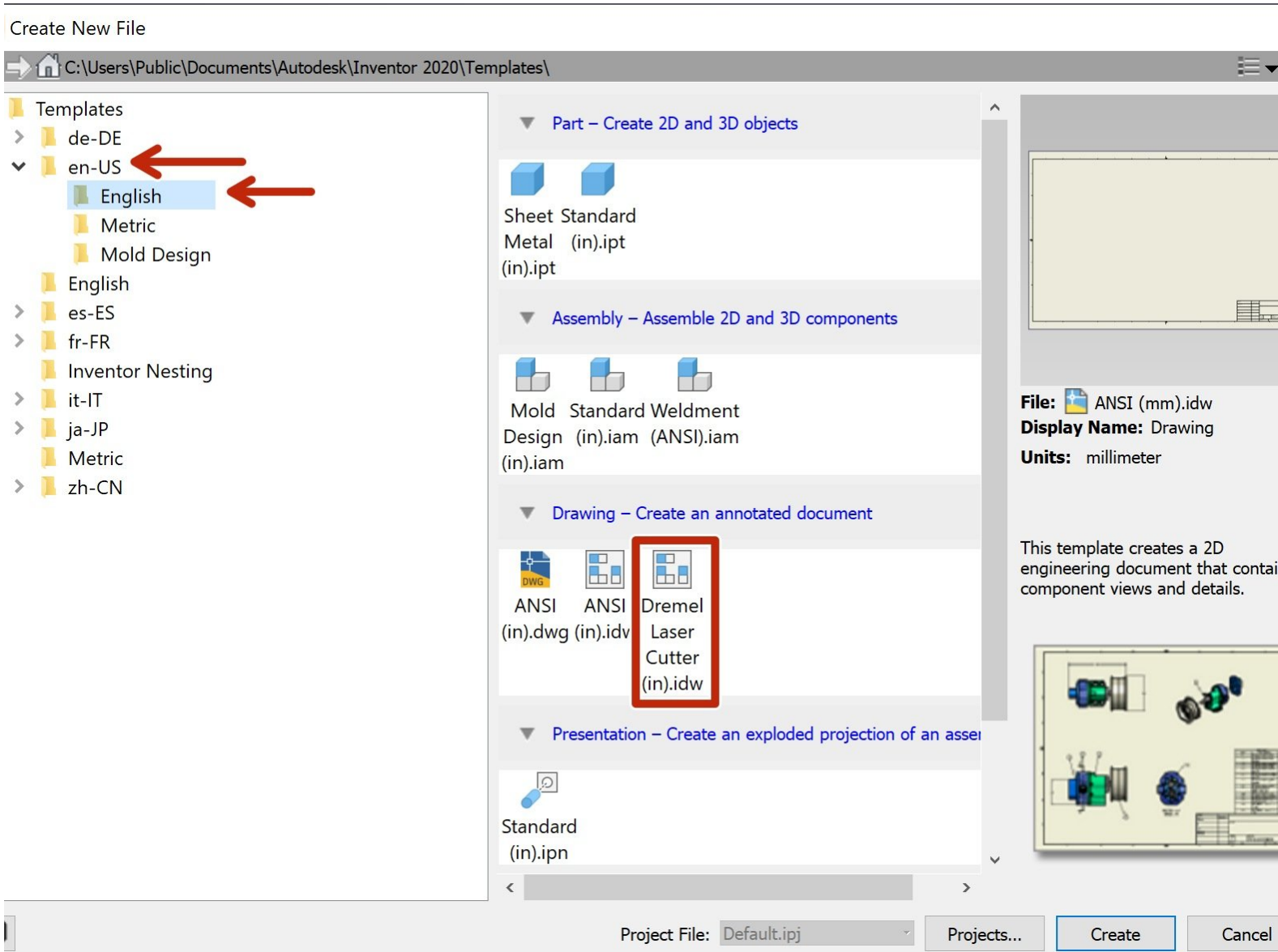




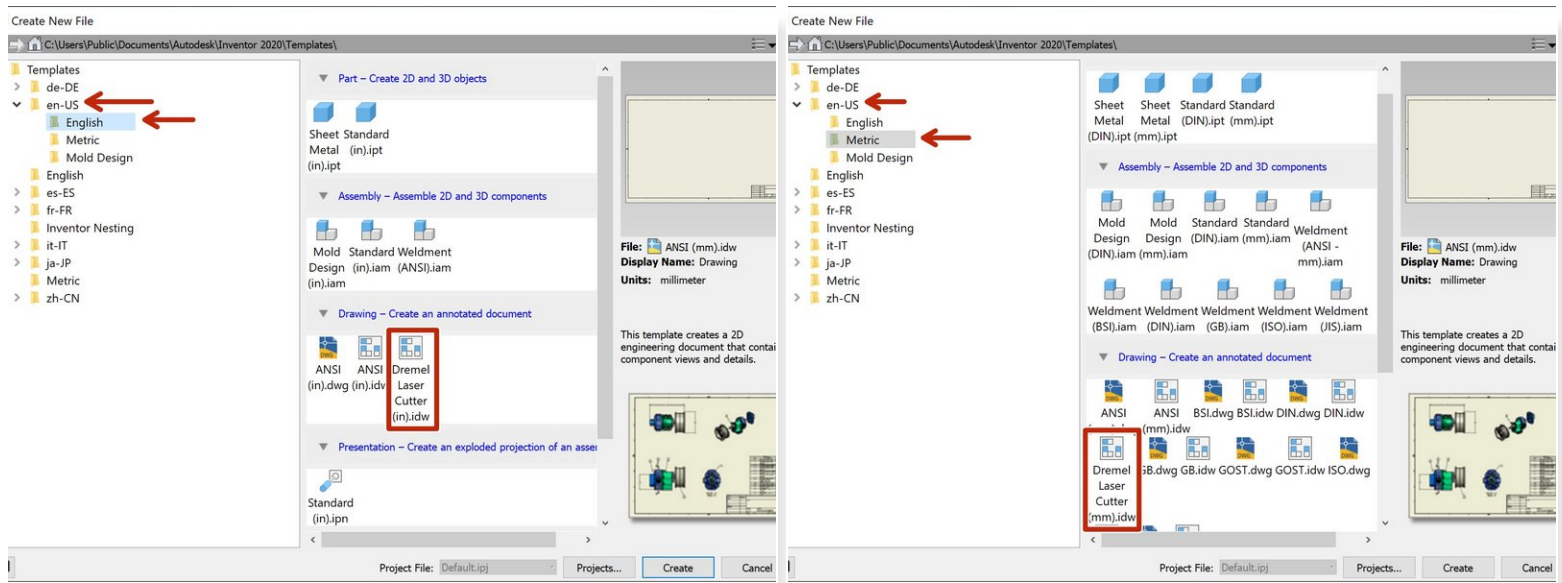
File Preparation for the Dremel Laser Cutter

This guide will go over the file preparation in Inventor 2020.

Written By: Nathan Young



Step 1 — Inventor 2020 drawing template

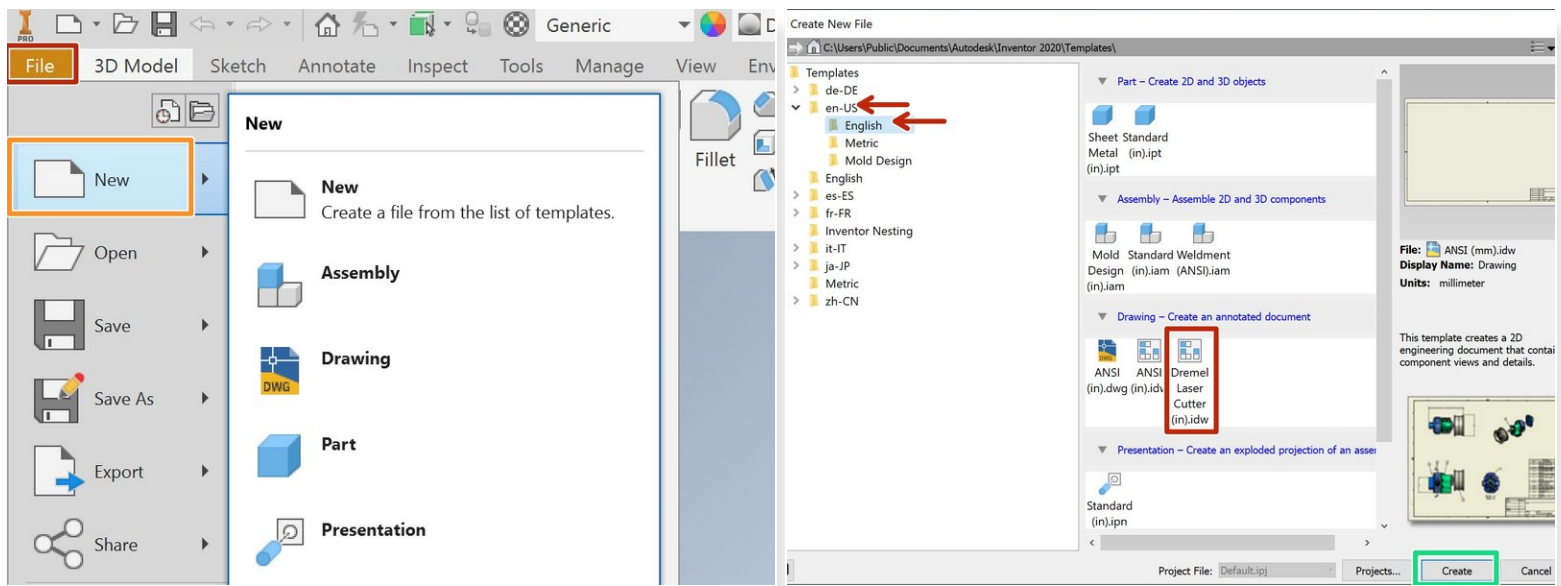


i For file preparation it is helpful to have a blank template. Download the files below and place them in the correct folders so they can be used in Inventor.

! This setup only needs to be done if using a personal computer. Lab computers and the Virtual Computer Lab have the appropriate templates already.

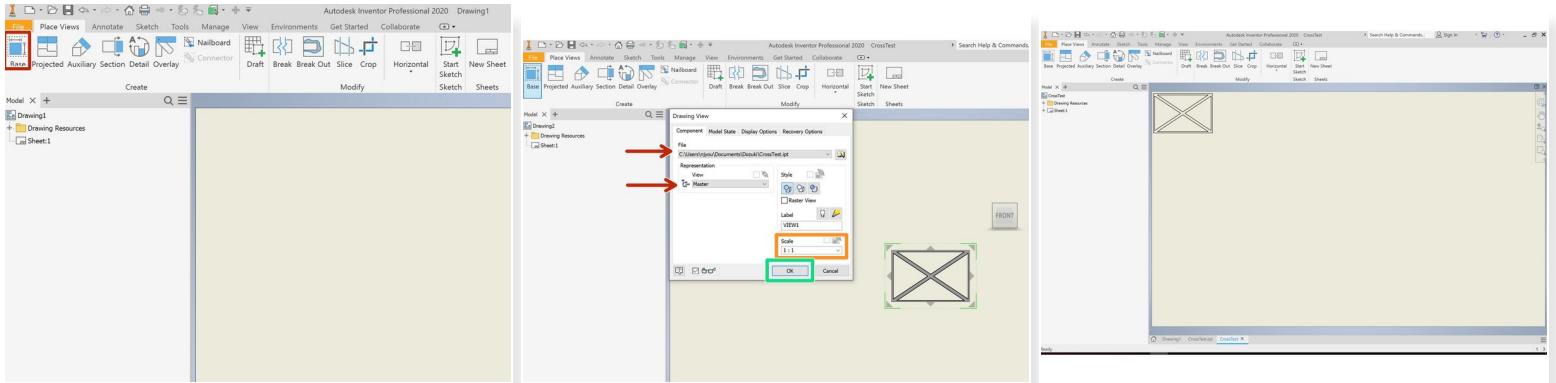
- Download the [English](#) and [Metric](#) drawing template files.
- In your file explorer navigate to C:\Users\Public\Documents\Autodesk\Inventor 2020\Templates\en-US\English and paste "Dremel Laser Cutter (in)" here.
- Next navigate to C:\Users\Public\Documents\Autodesk\Inventor 2020\Templates\en-US\Metric and paste "Dremel Laser Cutter (mm)" here.
- Now open Inventor 2020 and select **New**. The drawing templates will be under "en-US".

Step 2 — Start a new Drawing



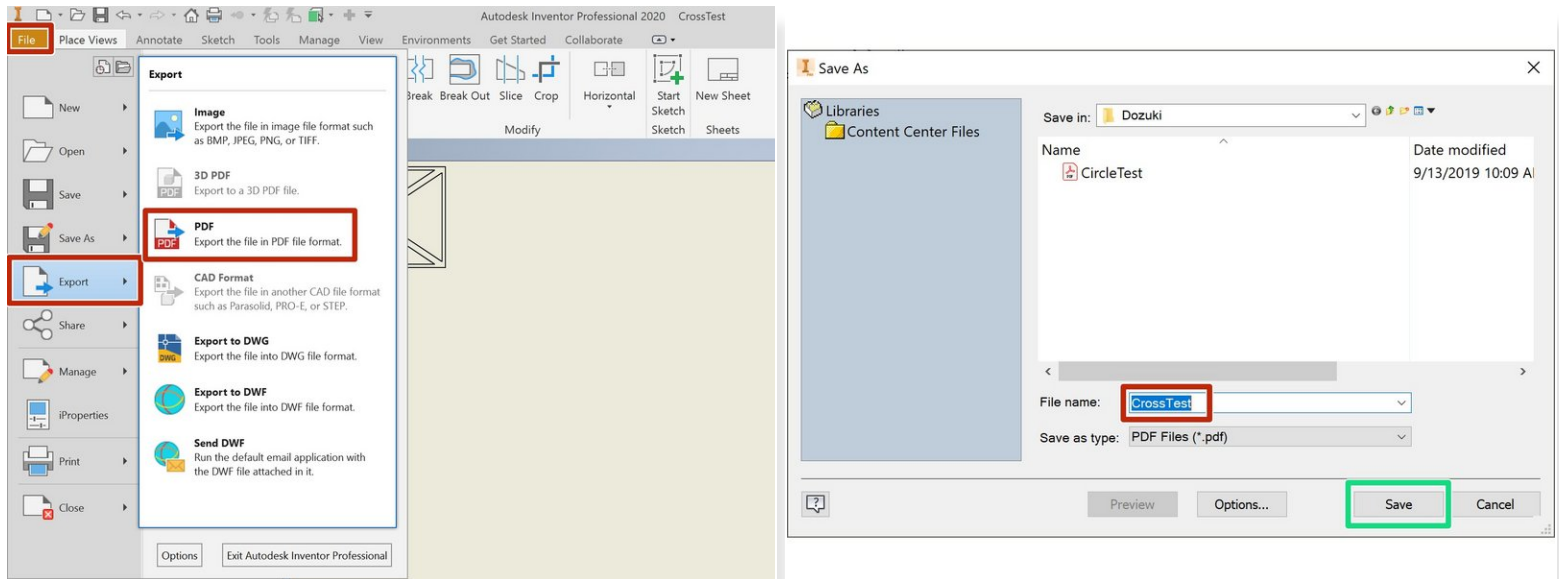
- Once you have a part file created, select **File**
 - Select **New**
- Select **en-US**, then **English**, then **Dremel Laser Cutter (in).idw**
- Click **Create**

Step 3 — Place Parts



- Click on **Base**
- ☞ Check that you have the right file and view selected
- Set **Scale** to **1 : 1**
- Click **OK** to place on drawing
- Move drawing to **top left** of the drawing.
- Repeat for any other parts you want to place on the same drawing

Step 4 — Export to PDF



- Select **File**, then **Export**, then **PDF**
- Name your file
- Click **OK**

Congratulations, you should now have a PDF file ready to be cut on the Dremel Laser Cutter!