



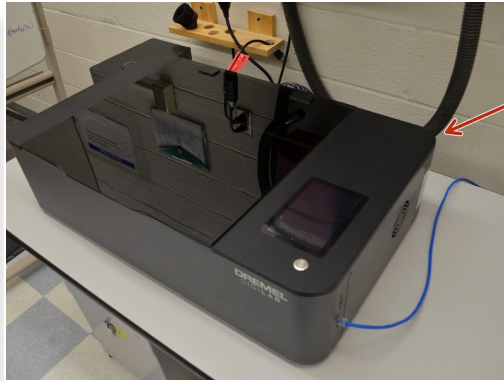
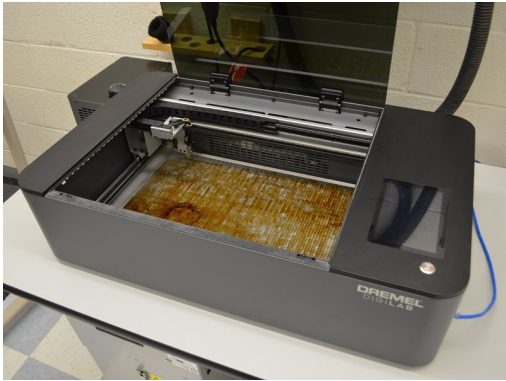
Basic Use of the Dremel Laser Cutter

This guide will explain the basic operation of the Dremel Laser cutter. It assumes that you already have a cut ready file.

Written By: Nathan Young



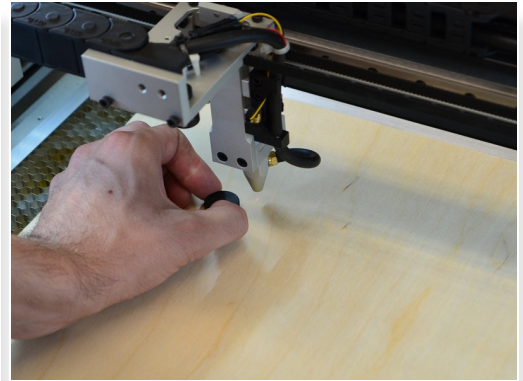
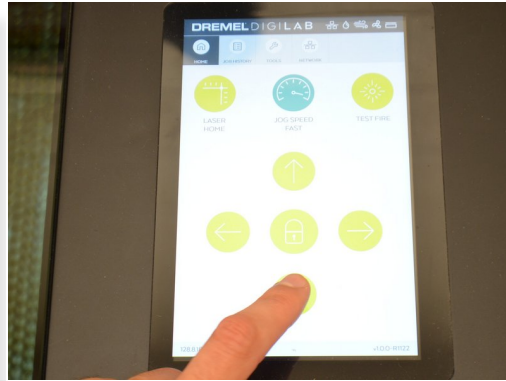
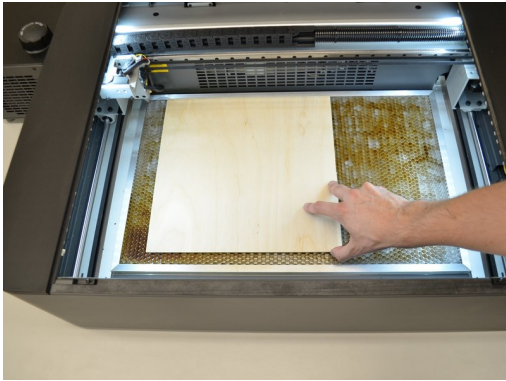
Step 1 — Turn on the Laser Cutter



⚠ Make sure that the bed is clear. The machine will home once it is turned on, and there is a possibility of the lens crashing into anything that left on the bed.

- i** The power switch is located in the back right of the machine.
 - Turn the switch **ON**
- i** The machine will power up and home. Continue once the control screen comes up.

Step 2 — Prepare Material

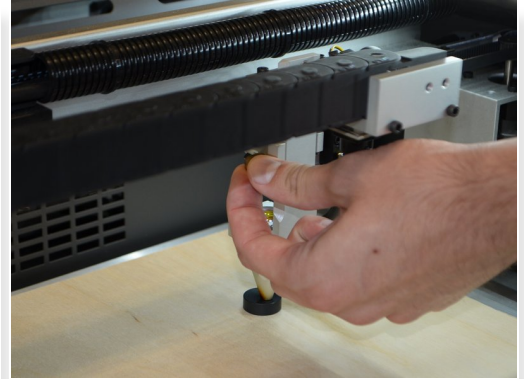
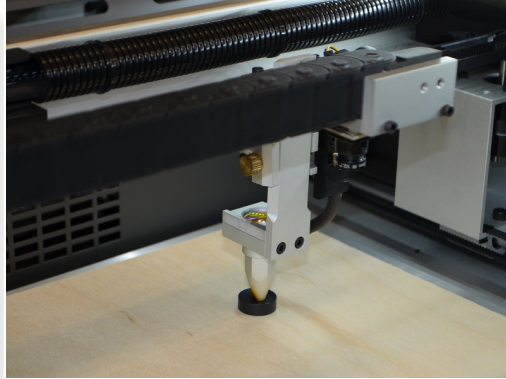
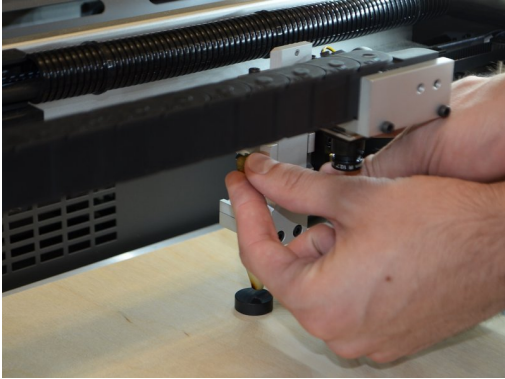


- Place material flat on the bed.
- Use the **arrow keys** to position the **head assembly** above the **material**.
- Place the **focusing puck** near the head.

⚠ **Make sure to not touch the focusing lens.**

- Loosen the **thumbscrew** to the left of the **focusing lens**.
- Place the **focusing puck** between the **material** and the **head assembly**.
- Lower the **head assembly** onto the **focusing puck** and tighten the **thumbscrew**.
- Remove the **focusing puck** and return the **head assembly** to the desired home position.

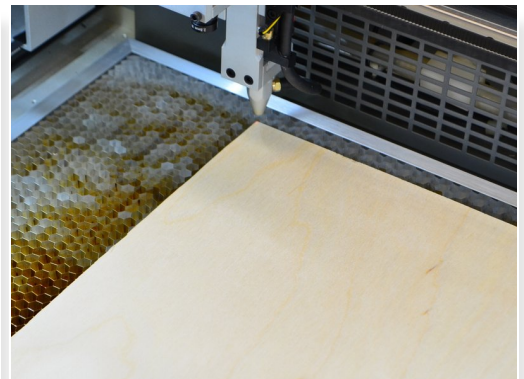
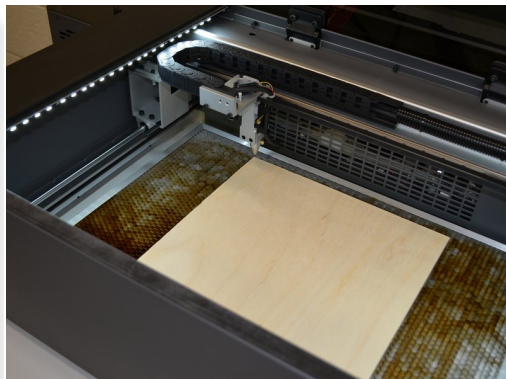
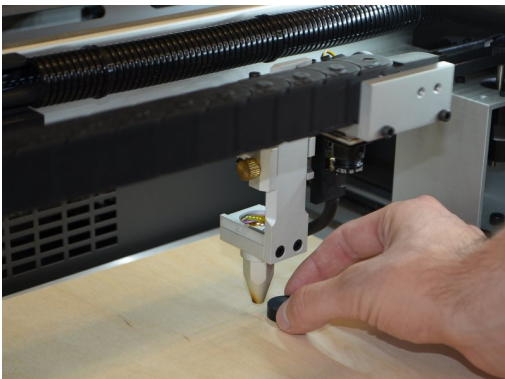
Step 3 — Adjust Focus



 Make sure to not touch the **focusing lens**.

- Loosen the **thumbscrew** to the left of the **focusing lens**.
- Place the **focusing puck** between the **material** and the **head assembly**.
- Lower the **head assembly** onto the **focusing puck**.
- Tighten the **thumbscrew**.

Step 4 — Set Zero



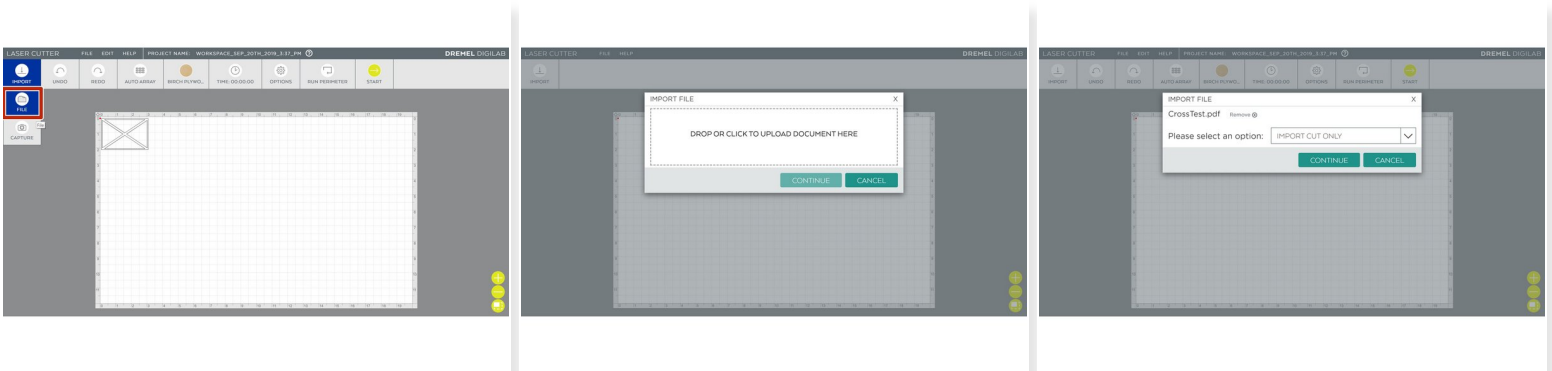
- Remove the **focusing puck**.
- Use the **arrow keys** to move to the desired home position.

Step 5 — Connect to the Laser Cutter



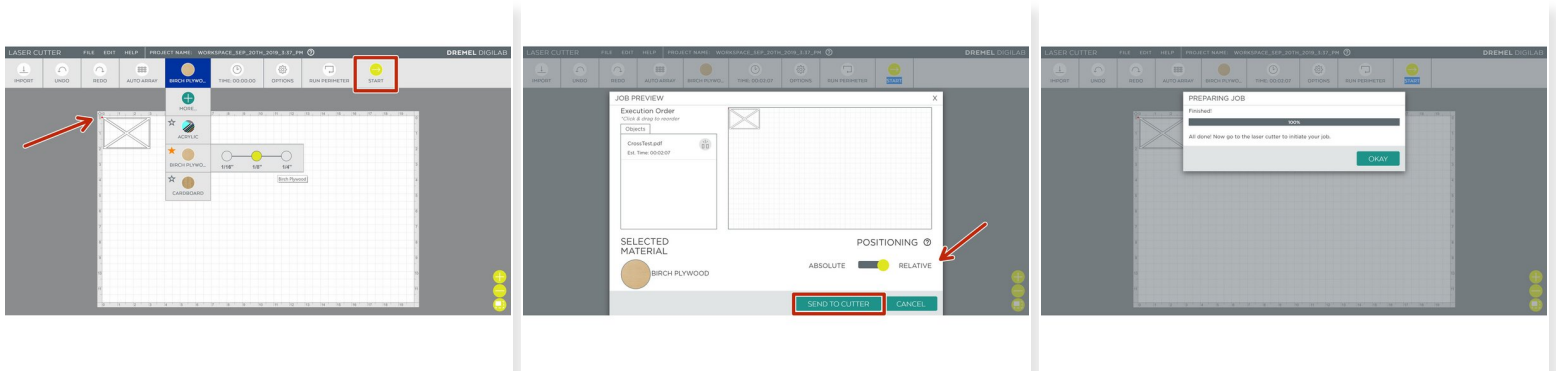
- For room 1201:
 - In a web browser navigate to <http://jmp1201lc.eng.umd.edu/>
- For room 1120:
 - In a web browser navigate to <http://jmp1120lc.eng.umd.edu/>

Step 6 — Import Cut File



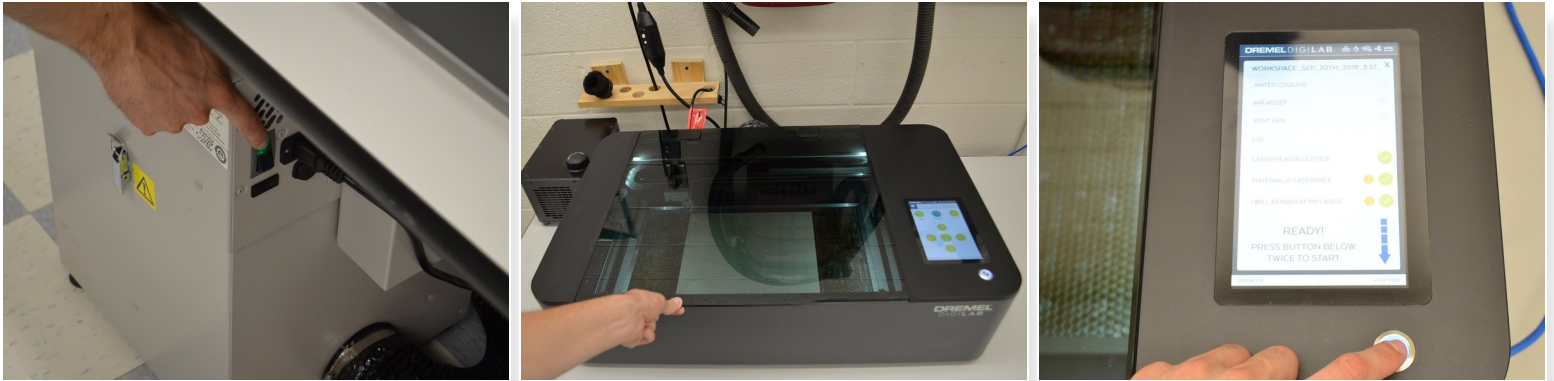
- Select **Import** and **File**
- Click to upload file, select the PDF that you wish to cut.
- Select **Import Cut Only**, then **Continue**

Step 7 — Adjust Cut Settings



- ☑ Check the file is placed in the top left corner.
 - Select the material **type** and **thickness**.
 - Click **Start**.
- ☑ Check that Positioning is set to **Relative**, and review the rest of your settings are correct.
 - Click **Send to Cutter**.
 - Click **Okay**.

Step 8 — Running the Cut

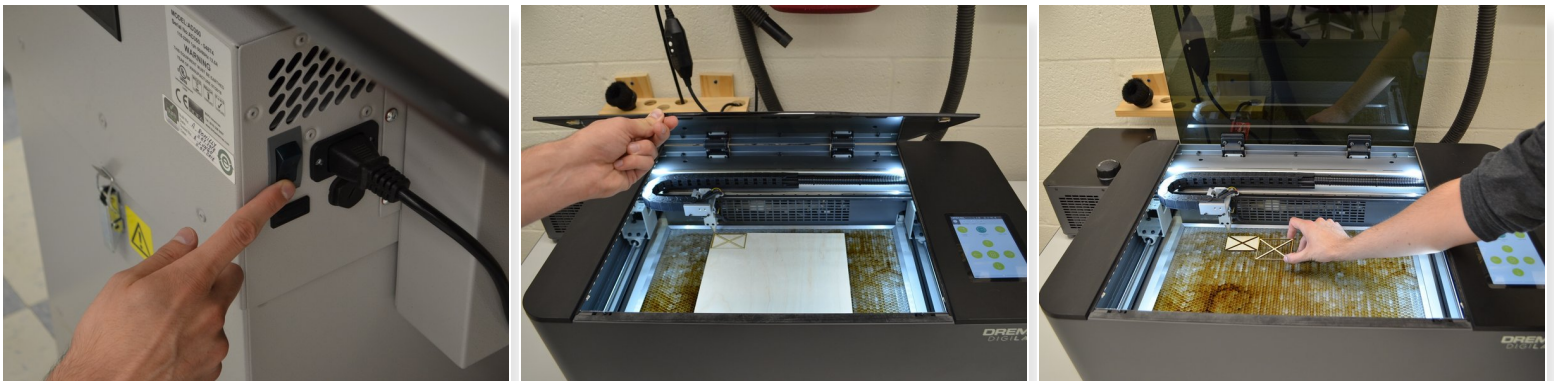


- Turn on the exhaust.

⚠ Wait for the exhaust to come up to full power before continuing.

- Close the **lid**, make sure the icon shows it as closed.
- Follow the on screen prompts and select the check boxes.
- Double click the button to start the cut.

Step 9 — Finish Cut



- Once the cut is finished turn off the exhaust.
- Open the lid and remove the material.

You have successfully cut your file on the Dremel Laser Cutter!