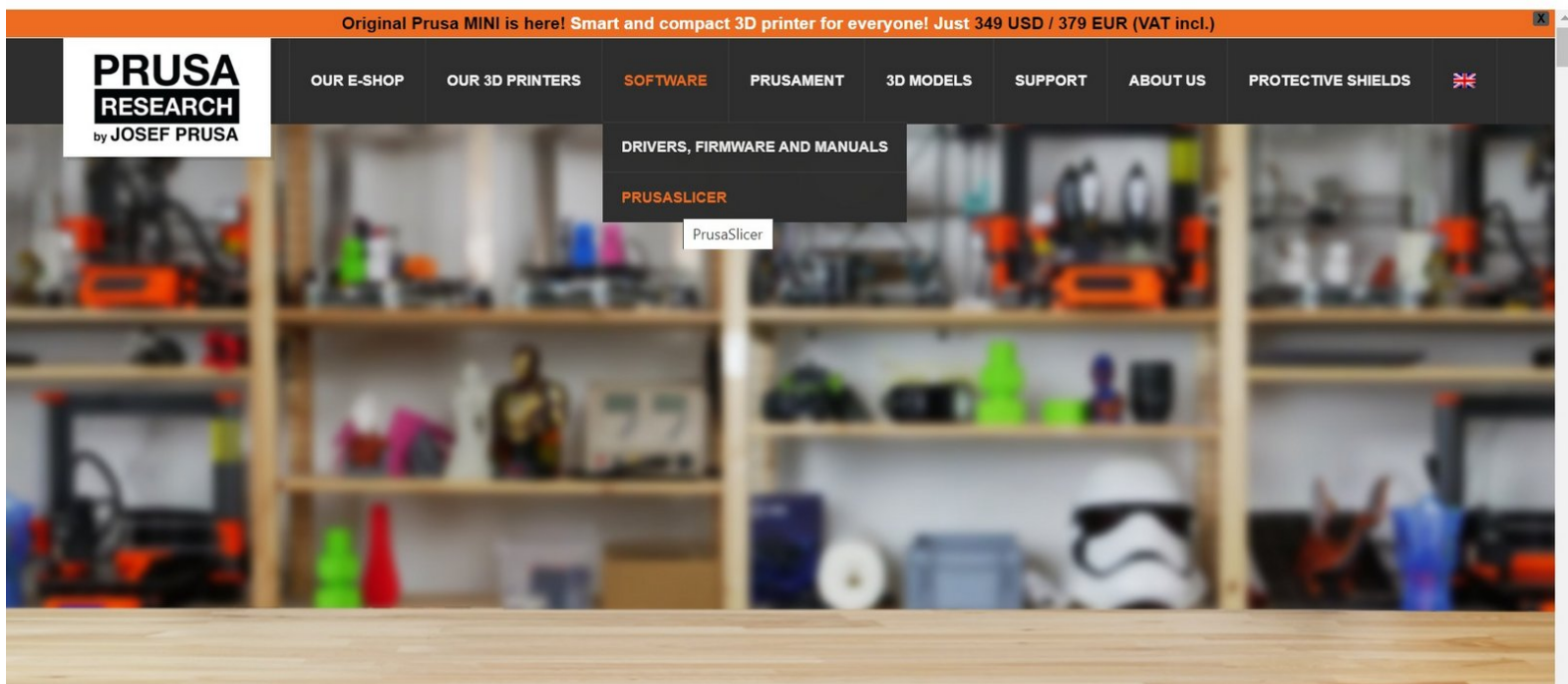




PrusaSlicer: Getting Started

This guide tackles how to install, setup, and slice prints in Prusaslicer

Written By: **Brandon Bennett Young**



Introduction

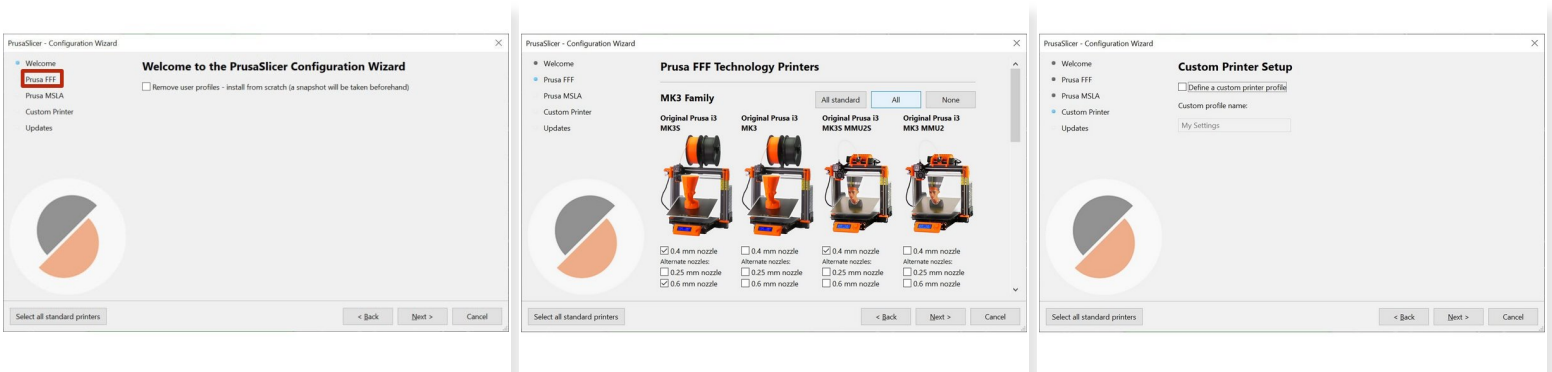
Images by Brandon Young

Step 1 — Downloading PrusaSlicer



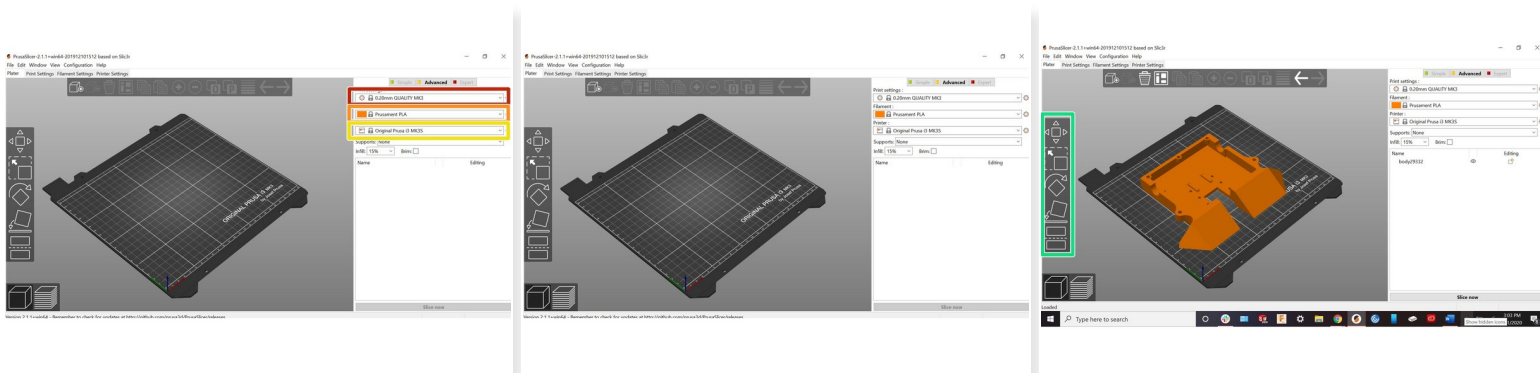
- Go to [Prusa3D](https://prusa3d.com)
- Click on PrusaSlicer
- Click on "Download Latest Version"
- Select appropriate version for your OS

Step 2 — Configuring Prusaslicer



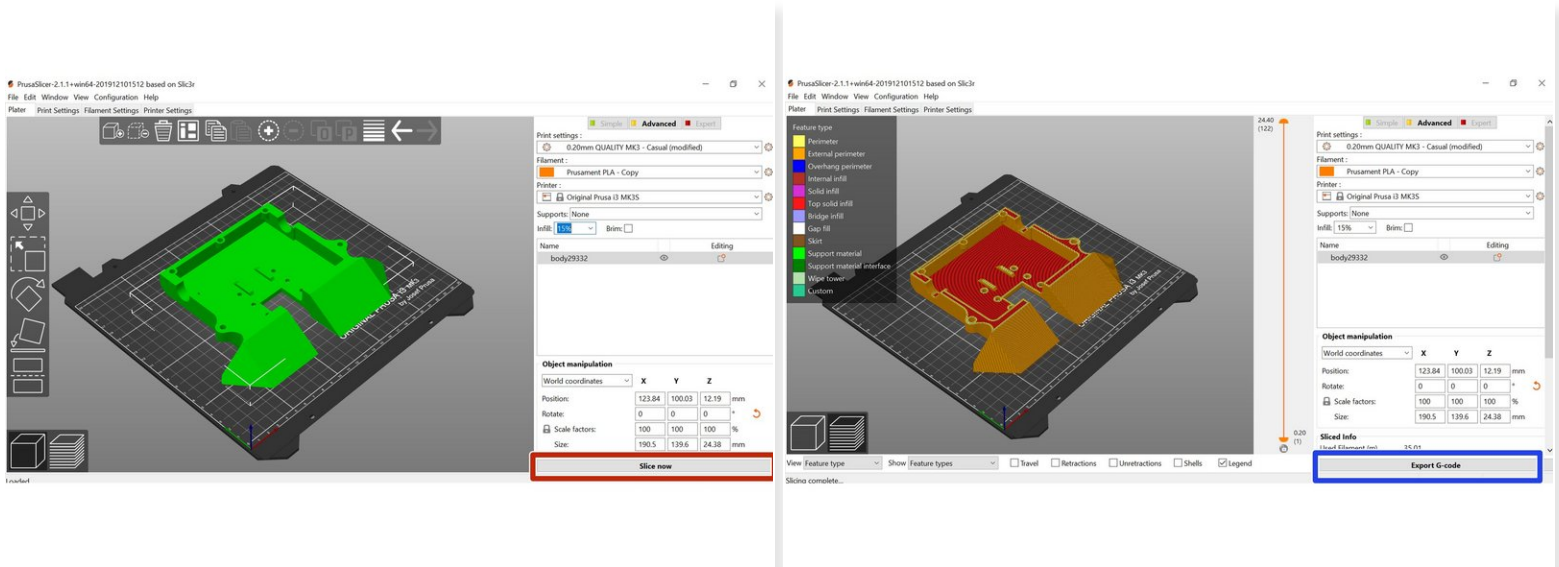
- Click on "Prusa FFF"
- Select the appropriate machine
 - ❗ In this guide we will use the Prusa i3 MK3S
- Agree to updates then click "Finish"

Step 3 — Adding a Part in PrusaSlicer



- Select different layer height options in this dropdown
- Select different filament options in the top right corner
- Select different machine options in the top right corner
- Drag and drop files onto the build plate
- ❗ PrusaSlicer will work with either STL or 3MF format.
- Select a model to use a button on the left
- ❗ Top to bottom: Move, Scale, Rotate, Lay on Surface, Cut Model

Step 4 — Slicing the Part



- Check settings one more time to make sure everything is good to go
- Click "Slice Now" at the bottom of the screen
- View time and filament estimates at bottom of right menu
- Click "Export Code"
- Save code to desired location