



01. ProX 200 Menus

Written By: Quinn Colville



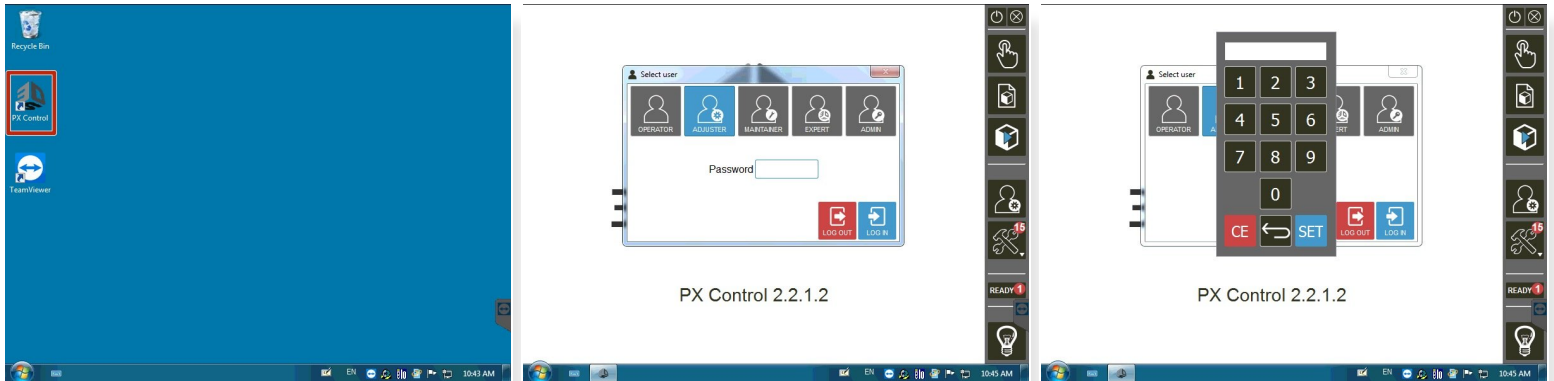
PX Control 2.2.1.2



Introduction

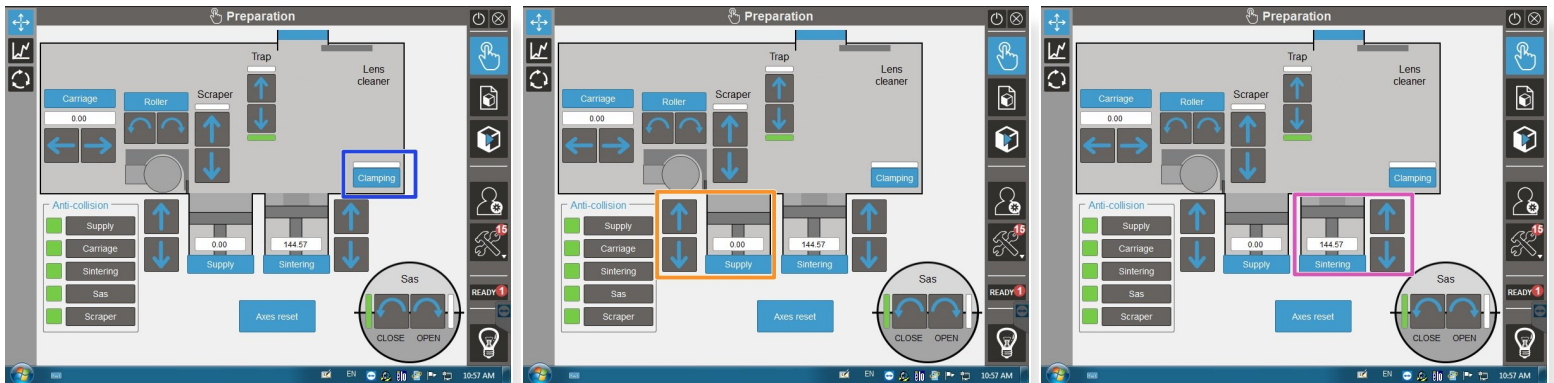
This guide will introduce you to all the different menus and icons you will see while operating the ProX 200.

Step 1 — Startup



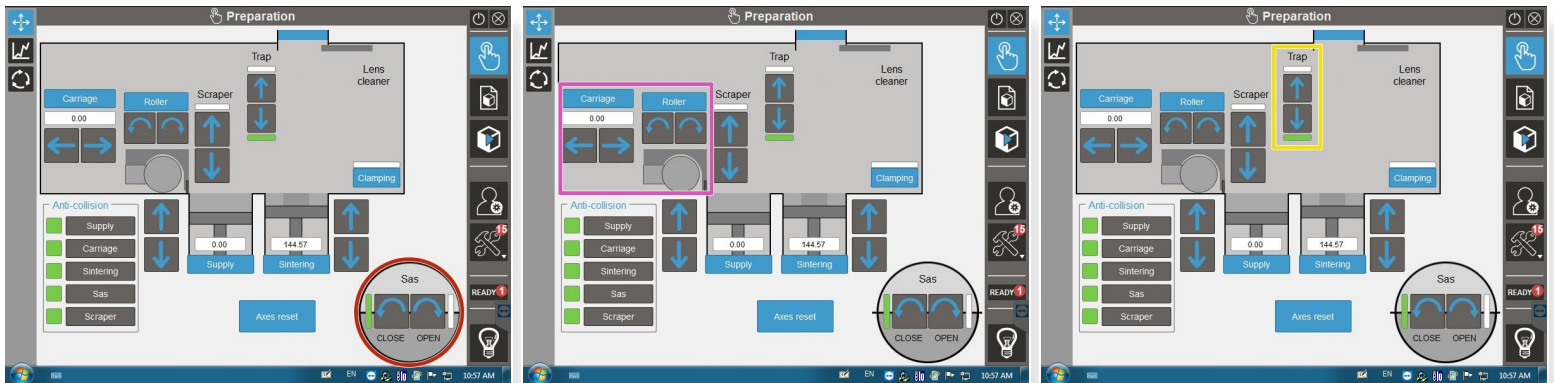
- i The ProX 200 runs on Windows OS
 - Double click **PX Control** to open the machine control application
 - Make sure the user is selected as **ADJUSTER**
 - Password **4123**
 - Touch **SET**
 - Touch **LOG IN**
- i Different users have different levels of control

Step 2 — Preparation Menu



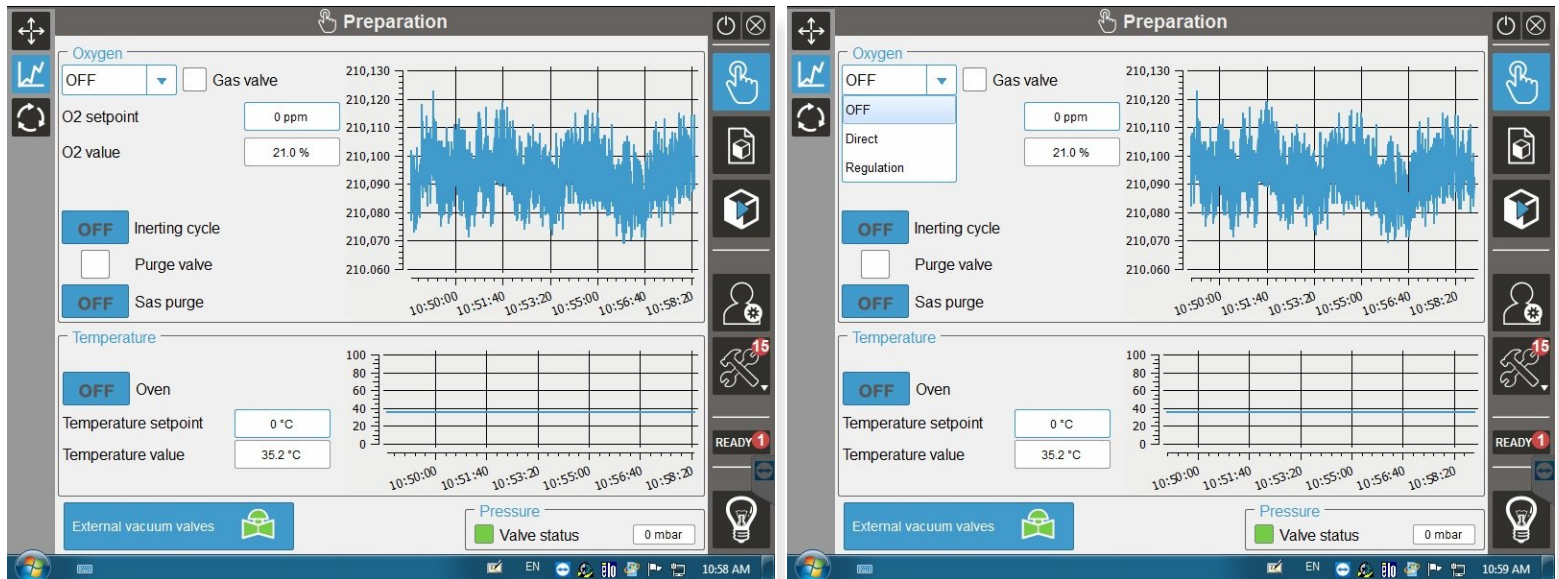
- i** This menu lets you operate the various internal mechanisms
- Green boxes mean the mechanism is operating properly
 - Red and orange boxes mean there is an error that needs to be fixed
 - **CLAMPING** lets you engage the suction cup on the build plate to hold it in place
 - **SUPPLY** lets you control the height of the powder supply (MAX 160)
 - **SINTERING** lets you control the height of the build plate (MAX 160)

Step 3 — Preparation Menu



- **SAS** lets you **OPEN** and **CLOSE** the sealed door on the front of the machine for transferring powder and tools
- **CARRIAGE** lets you move the recoater left and right. **ROLLER** lets you rotate the recoater roller
- **TRAP** lets you open and close the protective covering over the mirror system which is used during argon purging

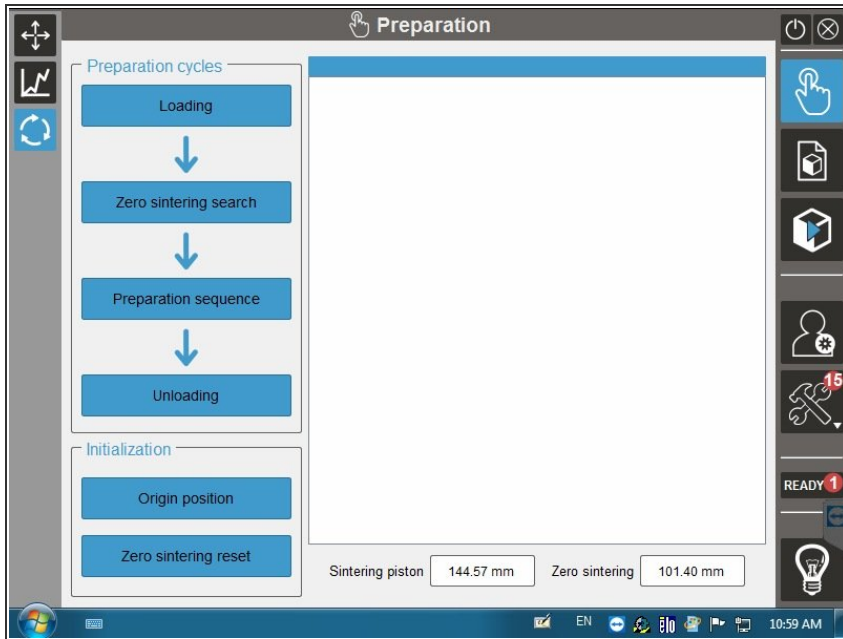
Step 4 — Preparation Menu (Gas)



i This menu lets you monitor and control the purging process.

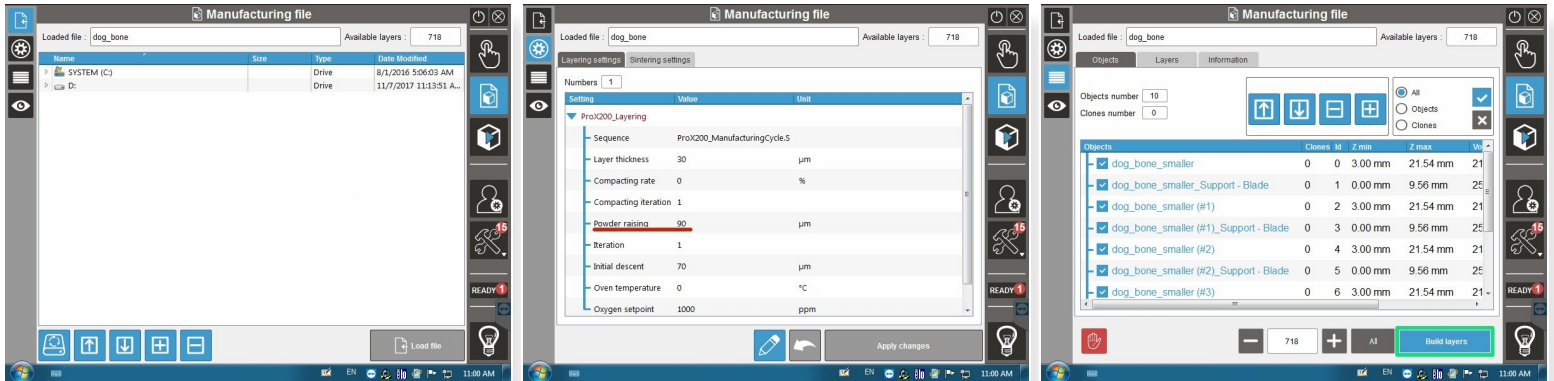
- Items you will control:
 - Setting the oxygen ppm level
 - Opening and closing the external vacuum valves
 - Setting the air flow to **DIRECT**
 - Turning the inerting cycle **ON**
- The graph is a helpful visual during the purge cycle to see the oxygen level

Step 5 — Preparation Menu (Layering)



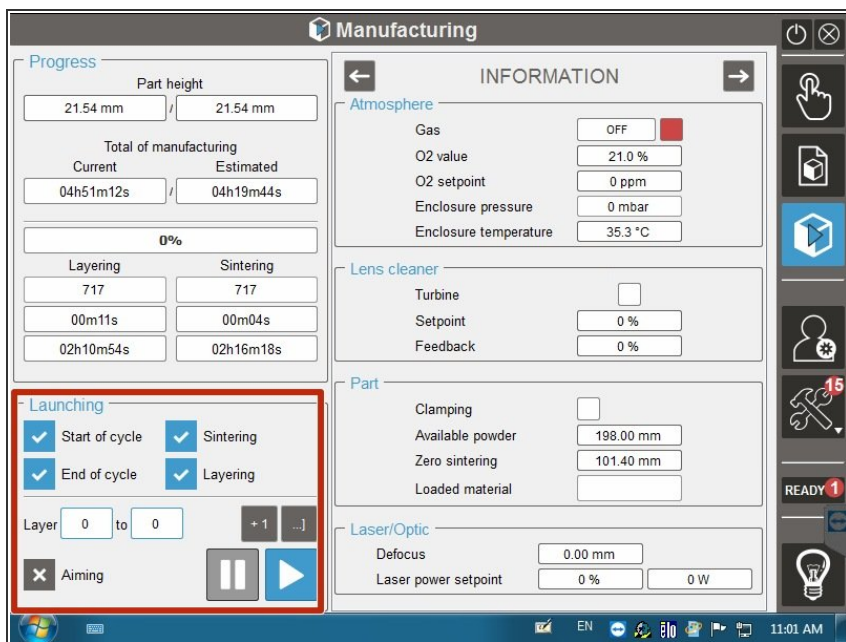
- i** This menu lets you run the preparation layer steps after loading the build plate
- **LOADING** lets you load the build plate
 - **ZERO SINTERING SEARCH** automatically sets the build plate to the proper height for the preparation layer
 - **PREPARATION SEQUENCE** lets you manually adjust the first layer to visually make sure you have an even distribution of powder

Step 6 — Manufacturing File Menu



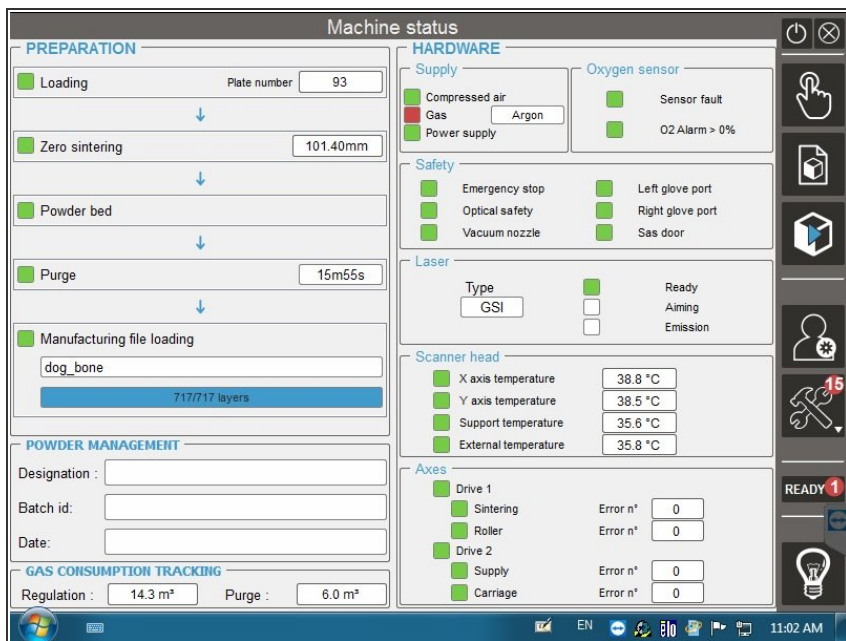
- i This menu lets you load and view the build file
 - You can search through the shared directory to find the file to upload
 - The settings tab allows you to view some basic settings for layering and sintering
 - You can adjust the **POWDER RAISING** if you need to reduce the amount of powder being used for a build
 - The objects tab lets you see the different components in the build file (part file, support file, etc.)
 - **BUILD LAYERS** allows the selected objects to be converted to the final build file
- i The eye tab shows a visual of the build file

Step 7 — Manufacturing Menu



- ❗ This menu shows the progress of the build and the atmospheric conditions
- These buttons allow you to manually layer and sinter as well as starting the build

Step 8 — Machine Status Menu



- ❗ This menu shows the status of the machine. You need all green boxes to start the build

Step 9 — Extras



- The power button turns the machine off
- The close button exits out of PX Control
- The tools menu is for service technicians only
- This button turns the internal light on