



## 04. Lens Cleaning

Written By: Quinn Colville



## Introduction

This guide will show you how to clean the ProX focusing lens.

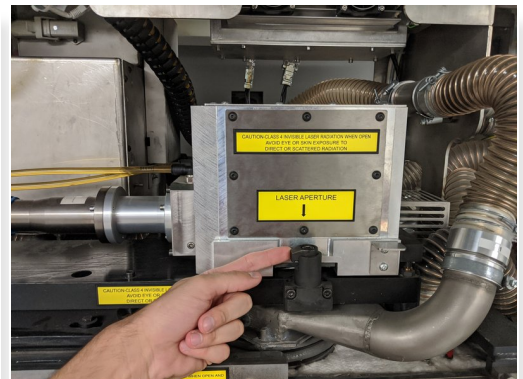
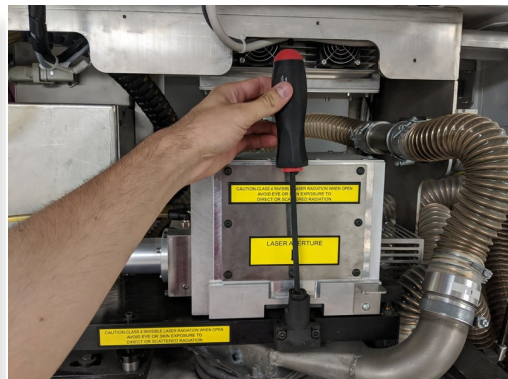
This is a skill you will develop and get better at over time! Don't get frustrated if it does not "click" your first time through. It will get better, I promise.

## Step 1 — Open the Machine



- Remove the light over the window
- Close the glass
- Press the key button and open the doors
- Carefully lift the hood

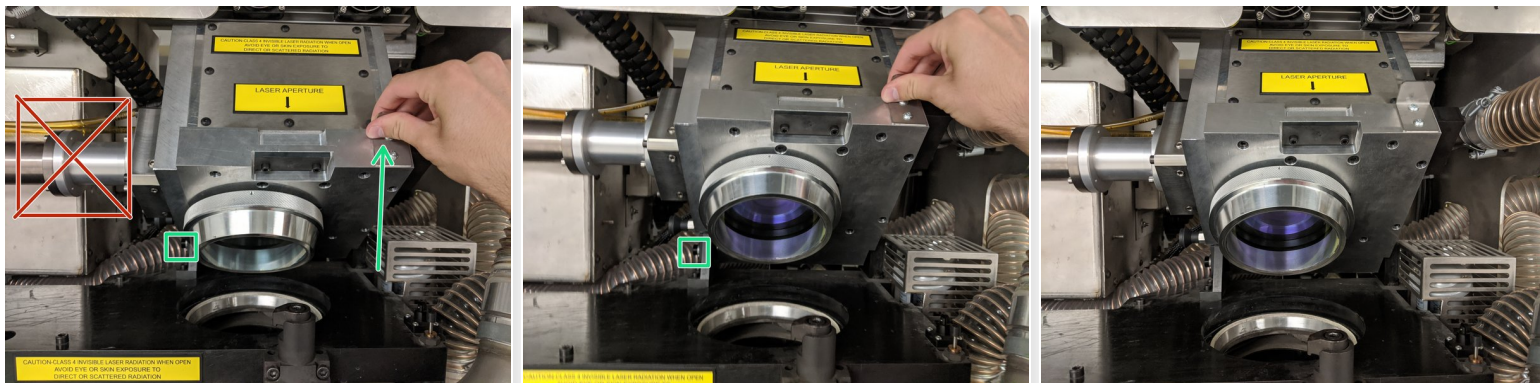
## Step 2 — Open the Lens



- Remove the 6mm Hex driver from the right "Tools" drawer
- Loosen the screw, do not remove it
- Rotate the clamp out of the way



## Step 3 — Open the Lens

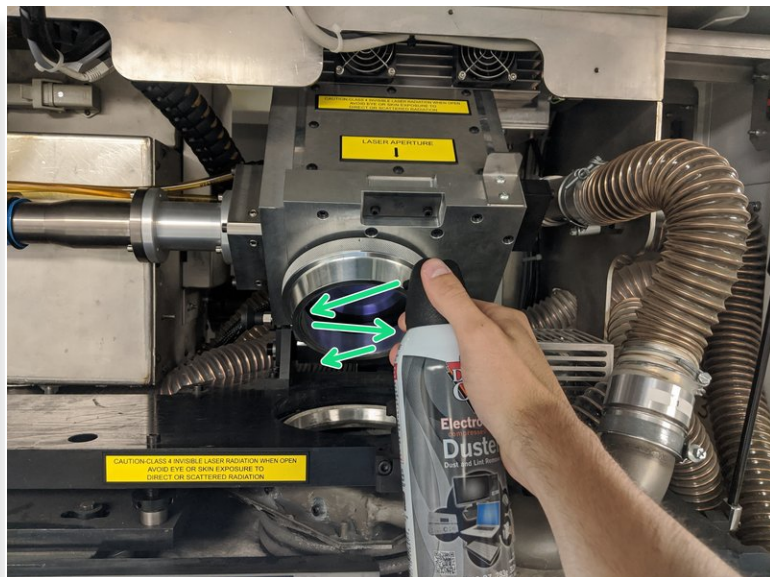
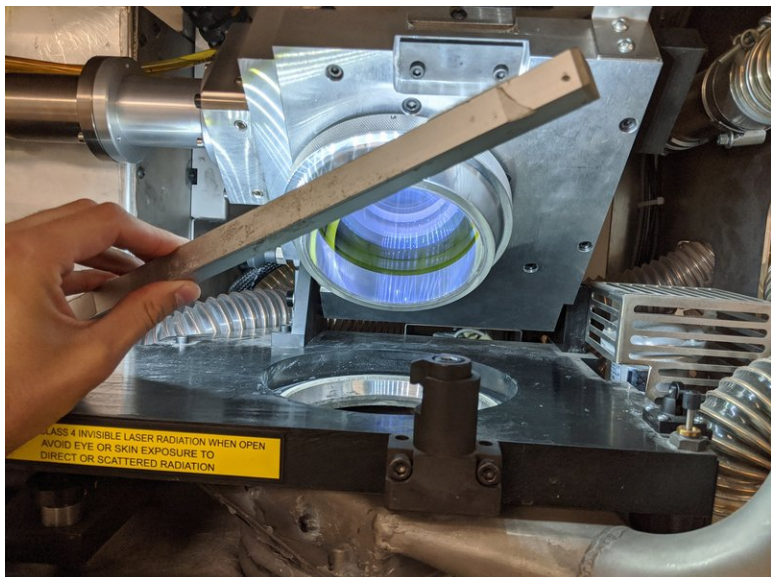


- Pull the plunger out from the left side and lift the box by the tab on the right

**⚠ DO NO HOLD BY THE FIBER COUPLER**

- Lift until the plunger clicks back in, it will support itself on the plunger

## Step 4 — Inspect Lens



- Use the bar light to help inspect the surface of the lens.
- Large particles can be blown off with compressed air

**⚠ Take care to not shake or turn the can upside down. You do not want the propellant to get on the lens**

## Step 5 — Put on Clean Gloves



- Put on a fresh pair of gloves
- ❗ Try to not touch the fingers of the gloves with your bare hands. It reduces the possibility of your hand oils from getting on the lens

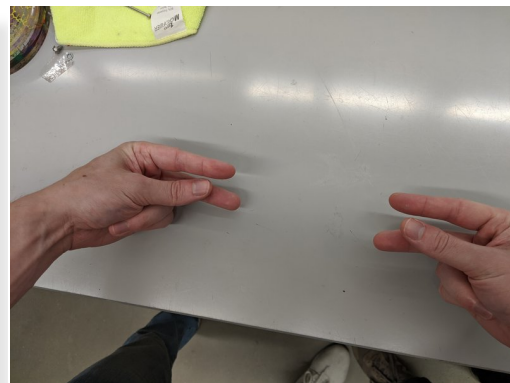
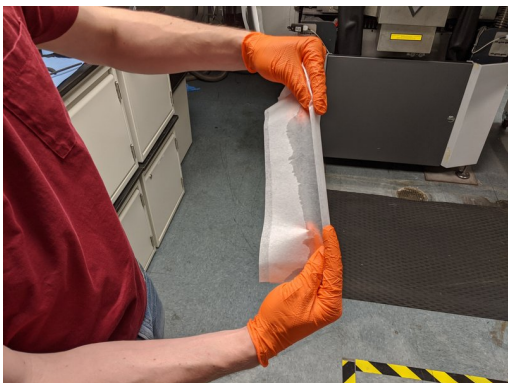
## Step 6 — Prepare Lens Paper



- Remove the lens paper from the "PROX" Drawer
- Pull a piece of lens paper out and fold in half longways
- Spray the top edge with Alcohol
- Crease the edge again to spread out and wipe off excess Alcohol

## Step 7 — Holding the paper

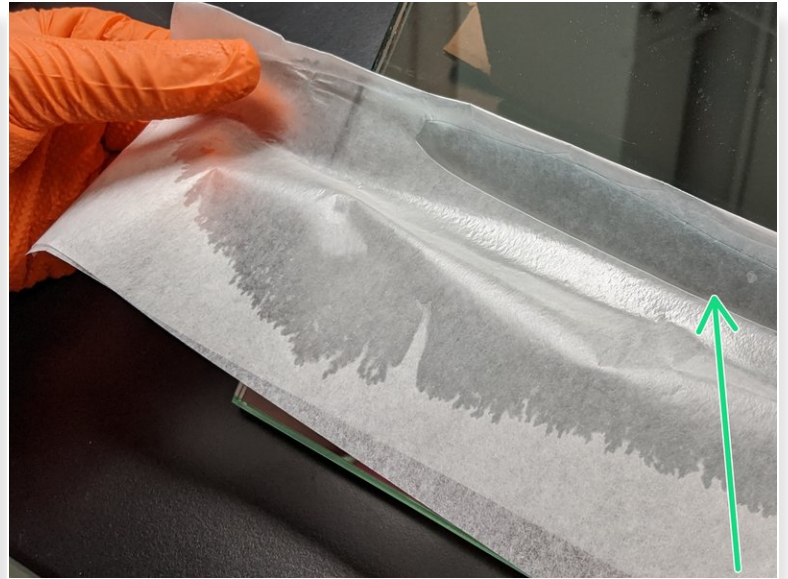
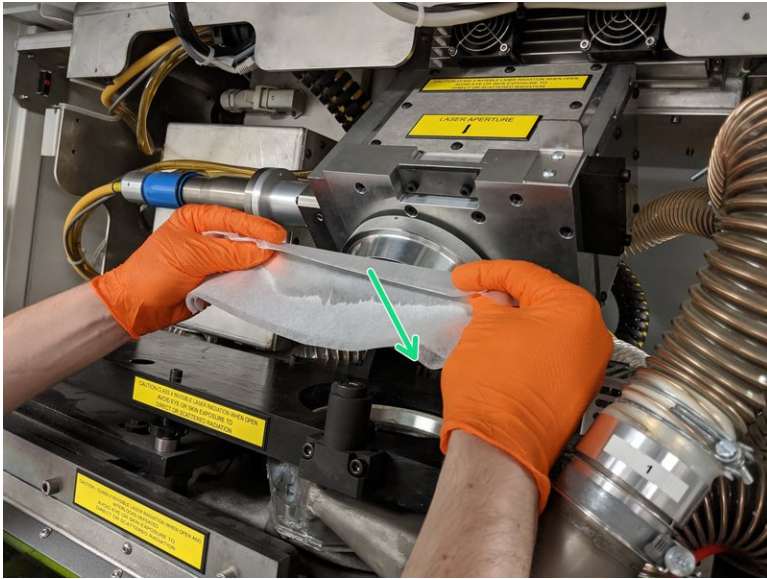
---



- Insert wisdom here.



## Step 8 — Lens Cleaning



- Use the "edge" from the corner to contact and clean the lens
- Start with a slow wipe from top to bottom to clean off any particles

**⚠ After the lens paper has been used once, it must be discarded**

- Follow up with a faster wipe to clean up streaks from the slow wipe
- i** When the paper engages the lens properly it will darken in color (see picture 2). You should see this across the whole width during the wipe.



## Step 9 — Inspect



- Use the light at an angle to inspect the lens and check for any remaining particles and streaks
- ① It can be hard to see streaks, moving both the light and your head are needed to see all blemishes left

## Step 10 — Repeat



- ① You probably have some streaks left over, and that's okay! Keep repeating the cleaning and inspecting steps until the lens is spotless
- Once the lens is 100% clean you can move on

## Step 11 — Close the Lens




 The box is heavy, use extra care

- Pull the plunger to the left while holding by the tab
- *Slowly* lower the lens into place
- Turn the lock back into place
- Lightly screw back into place. Just snug, it does not need to be tight

## Step 12 — Close the ProX



- Carefully lower the hood, support the weight all the way down
-  The gas springs give out very close to the end, do not let it slam down
- Close the doors

