



# RPL Lab Safety for the Nanoscribe

This guide will provide the necessary information to safely occupy the RPL and work with the Nanoscribe.

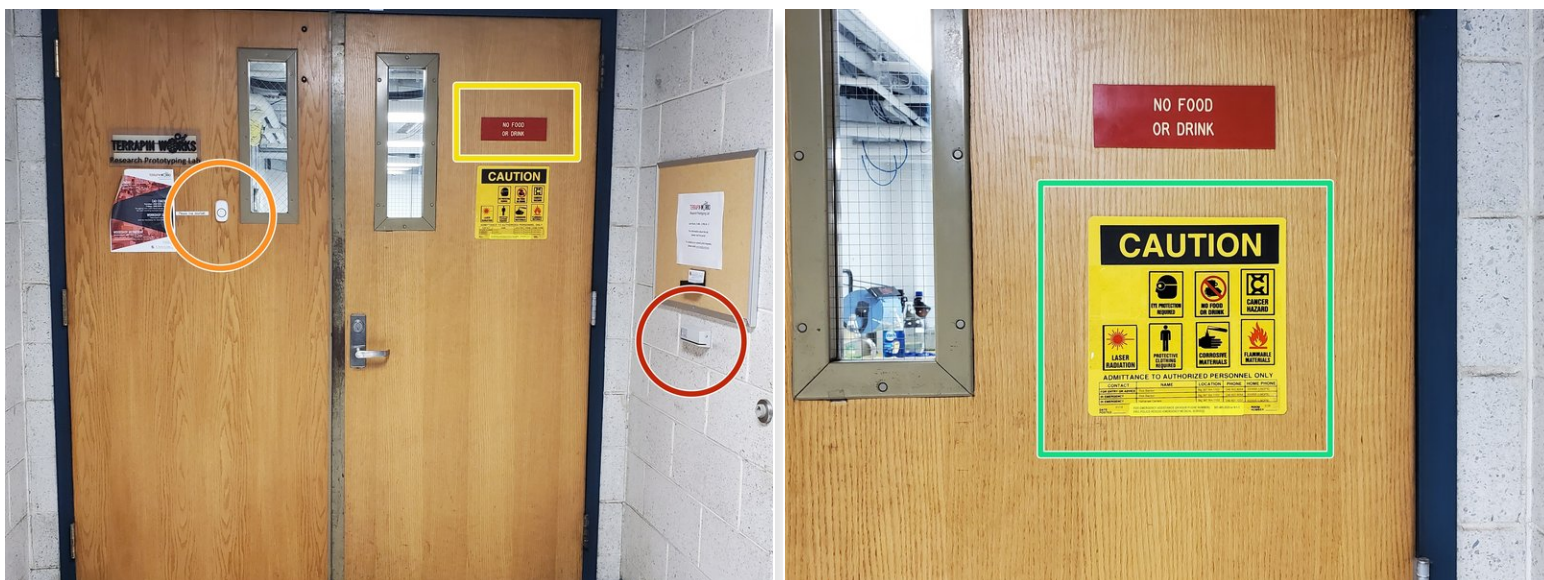
Written By: Josephine Rose Stair



## Introduction

The Research Prototyping Lab (RPL) is located in the Glenn L. Martin Hall (EGR) in room 0126. The main lab space is accessed directly from the entrance, and the Nanoscribe room is through the door immediately to the right of the RPL entrance.

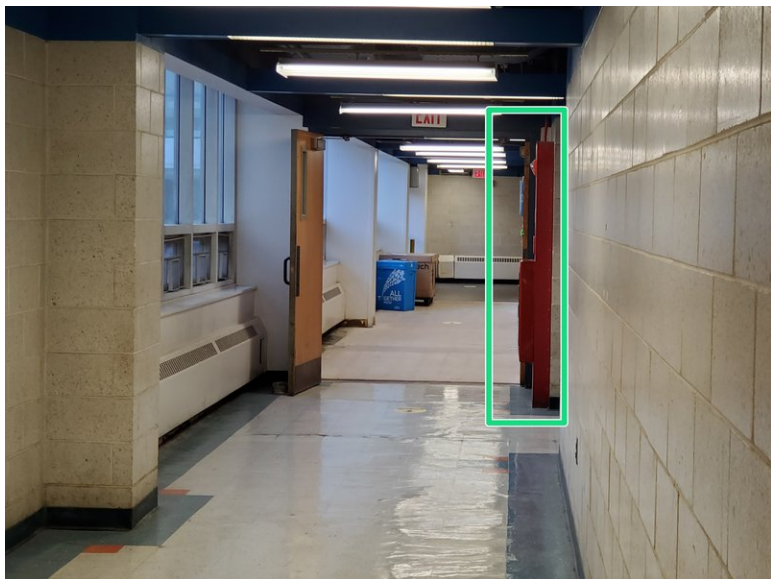
## Step 1 — Entering the Lab



- UID swipe access is required to enter the lab.
- If you don't have swipe access yet, ring the doorbell or knock to be let in.
  - ① If someone is in the Nanoscribe room, ring the doorbell, as knocking will not be heard over the sound of the fume hood.
- Do not bring food or beverages, other than water, into the lab.
  - ⚠ Water is NOT allowed in the Nanoscribe room.
- The room sign has basic safety hazard diagrams and emergency contact information.



## Step 2 — Fire Safety



- The closest fire alarm is by the exit sign on the right as you exit the RPL.
- There are two fire extinguishers within the lab, located by the lab door.
  - ① The red extinguisher is for normal fires, and the yellow extinguisher is for metal fires that originate from the Pro-X.
- ⚠ In the event of a fire, your only obligation is to get to safety.
  - If there is a fire, activate the fire alarm if it is accessible.
  - Exit the building as quickly as possible and call 911.

## Step 3 — General Lab Safety



- The first aid kit is located above the sink.
- The Fire Blanket should be used if someone's clothes catches fire
- The chemical spill kit is located under the sink. It contains instructions for use inside.
- The fire cabinet contains the chemicals used with the Nanoscribe, if the bottles within the Nanoscribe room run out.
- The MSDS book is located on the grey shelving unit.
- Oxygen sensors are mounted on the front and back walls of the main lab space.

## Step 4 — Personal Protective Equipment



- Gloves are required to work in the Nanoscribe room.
  - ① Gloves should be donned before entering the room.
- Eye protection can also be worn, but it is not required.
- Ear plugs are available if you need them because of other lab activities.
- Masks are also available if you wish to use one