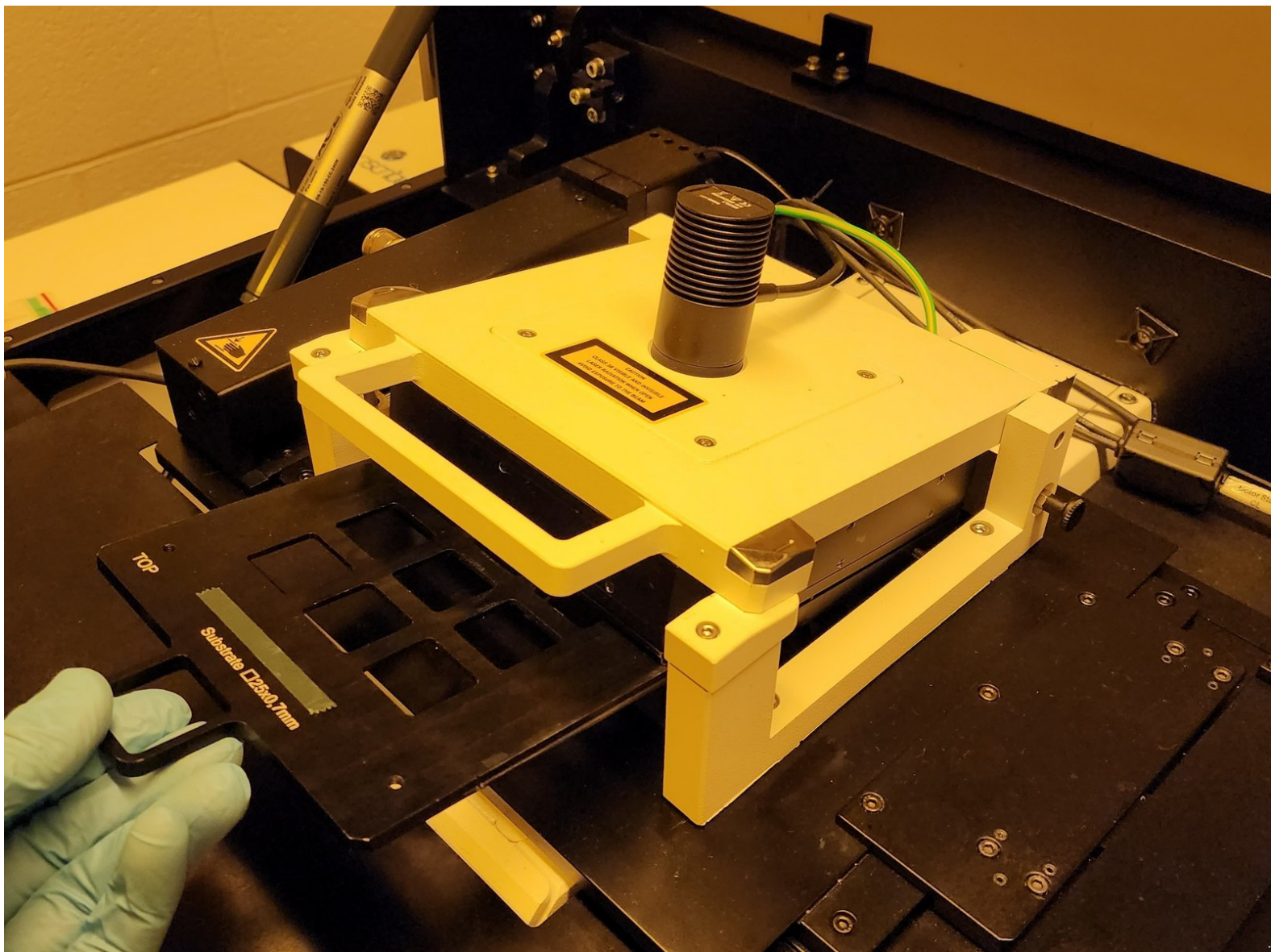




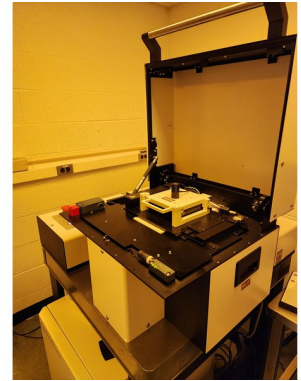
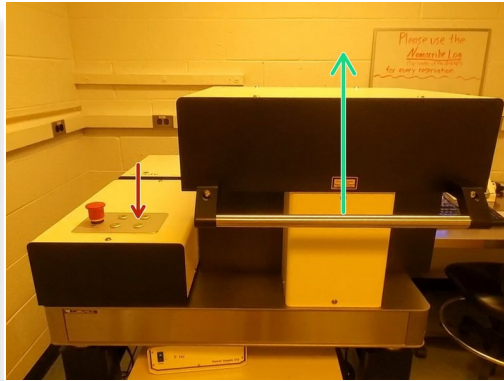
Nanoscribe: Inserting and Removing Sample Holders

This guide will walk you through inserting and removing sample holders for the Nanoscribe.

Written By: Josephine Rose Stair



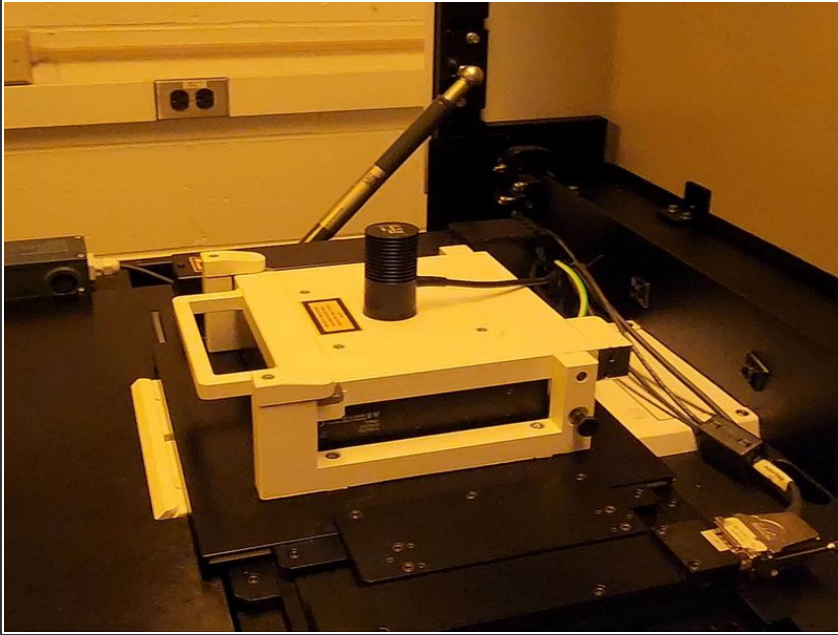
Step 1 — Accessing the Print Chamber



- If NanoWrite is running, ensure that the exchange holder window is open.
- When the "Process" button is off, press the "Open button" on the SPS panel to disarm the top hatch lock.
- Open the top hatch and gently guide it into a 90° upright position.

⚠ After the lid begins to raise, do not simply release it. This can damage the hinge.

Step 2 — Angle the Sample Holder



- Before inserting any samples, place the sample holder in the angled position

✦ This allows samples to be inserted more easily, without risking resist getting onto undesired surfaces.

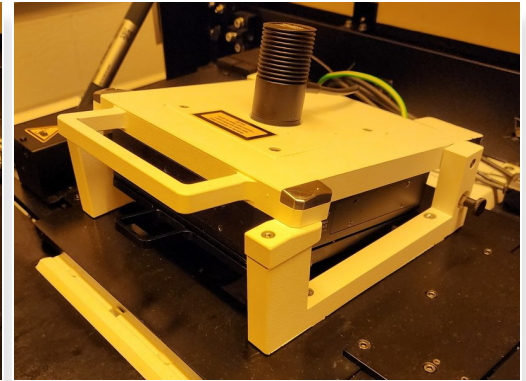
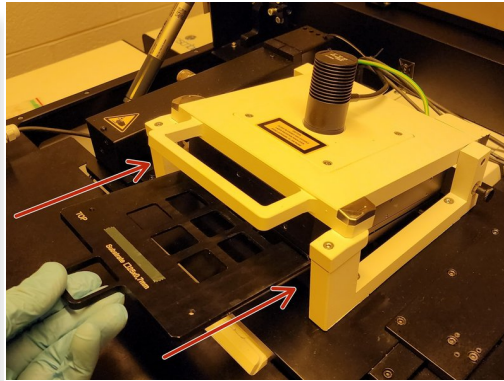
① First, Release the white latches on the side

① Second, lift the stage by the white handle

① Third, push the latches back in and lower the stage, such that the stage rests on the latches in an angled position.

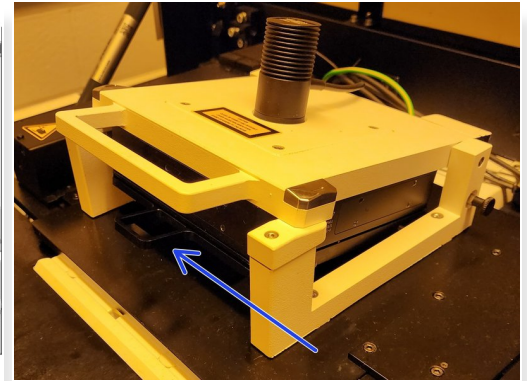
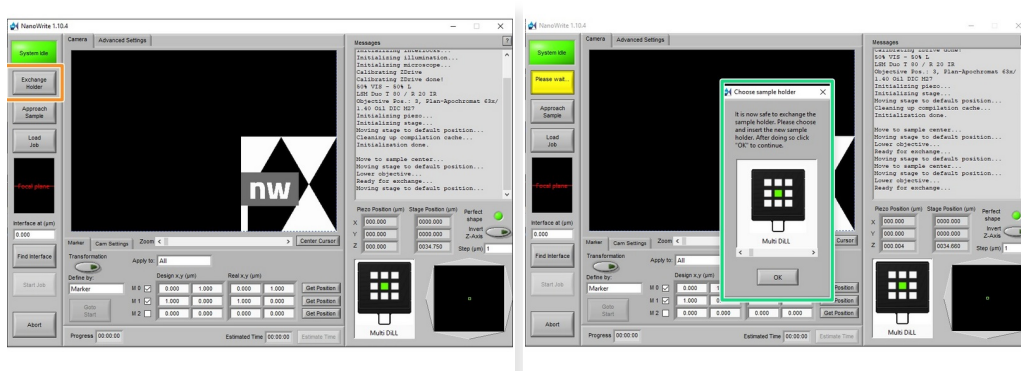
⚠ Only lift the piezo flap using the white handle. Attempting to lift it using the sample holder handle may damage the piezo stage.

Step 3 — Inserting the Sample Holder



- Flip the sample holder so the top side is facing upwards.
 - ① The tape and slide should be facing downwards.
 - ① This applies to the OIL mode sample holder as well
- Insert the sample holder into the front of the piezo stage, aligning it with the slots on the machine.
 - ① This may require a little bit of force, take care to not insert the sample holder too hard.
- Close the top hatch when you're ready to print.

Step 4 — Removing the Sample Holder



- Lift the stage to the angled position (refer to step 2)
- Open the "exchange sample holder" window
 - Ensure that the "Exchange Sample Holder" window is open on NanoWrite and open the top hatch.
- Slide the sample holder out from the piezo stage using the sample holder handle.