



Configure Zoom to auto-start & log in on your Windows PC

In this guide, you will learn how to configure Zoom to auto-start and log in when you log in on your Windows PC.

Written By: Nicholas Bentley

The Zoom logo, consisting of the word "zoom" in a white, lowercase, sans-serif font, centered on a solid blue rectangular background.

Introduction

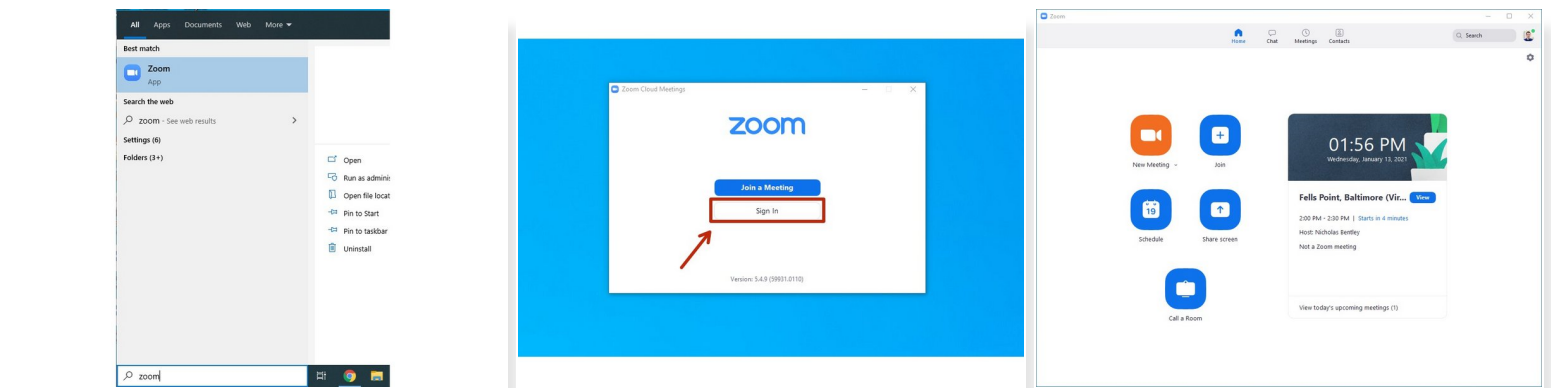
In this guide, you will learn how to configure Zoom to start when Windows starts & how to log in after Zoom starts. After you are logged in to Zoom, you will be shown as “Online” to other Zoom users, thus enabling features like direct-dial & chat.

Step 1 — Log in to your computer



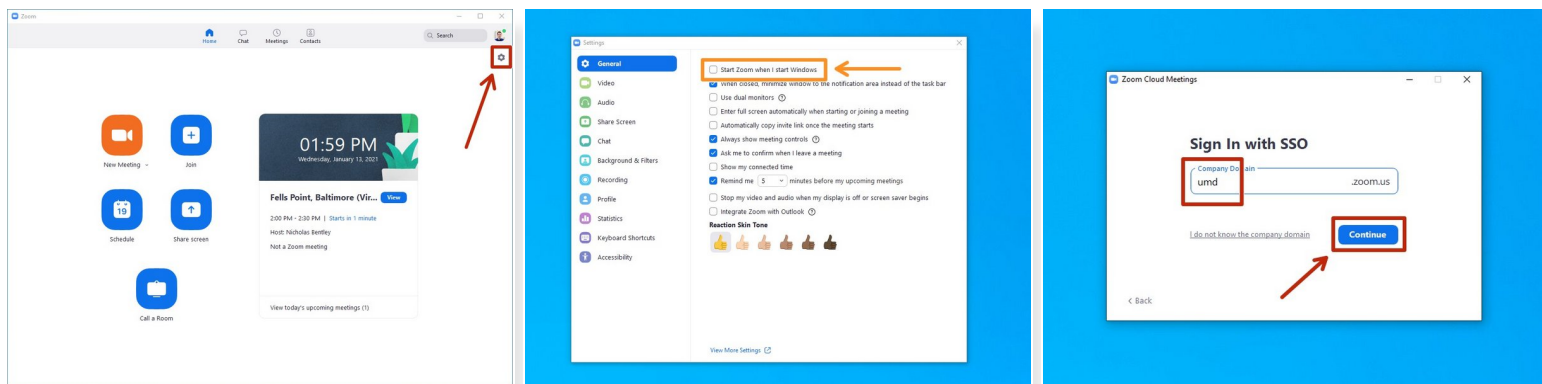
- Before you begin, log in to your computer and go to the desktop.
- ① If you do not have Zoom installed on your computer, please install it prior to continuing this guide.
 - ★ Download via <https://zoom.us/download>

Step 2 — Open the Zoom application



- Go to Start > Zoom to open the Zoom application.
- ❗ Pro tip: use the search bar at the bottom & type Zoom to quickly locate the application.
- If you are not signed in to Zoom, do so now.
 - You should choose the **Sign In with SSO option**, in the Enter your company domain field type **umd** and then click **Continue**.
 - ❗ CAS will open in your browser. Sign in & complete your Duo push. When you are finished, Chrome may prompt you to "open a link in Zoom." Click allow or ok.
- Once you are on the Zoom home screen, continue to the next step. The home screen looks like the third picture in this step.

Step 3 — Configure Zoom to start when Windows starts



- Click on the settings cog in the upper right corner of the Zoom application.
 - In the settings window that pops up, click on **General** if it is not automatically selected & then check the box for **Start Zoom when I start Windows**.
 - From now on, when you start Windows, Zoom will also automatically start. You will still need to go through the sign in process but everything will be pre-filled.
 - When Zoom first loads, click **Sign In** as you normally would, then click **Sign In with SSO**, then click Continue (umd should already be pre-filled in the text box). You will not need to authenticate via CAS again & will be automatically signed in.
- i** After you sign in to Zoom, you will be shown as "Online" to other UMD Zoom users, thus enabling direct-dial & other Zoom features.

Congratulations, you now know how to configure Zoom to start when Windows starts & how to sign in after Zoom starts.