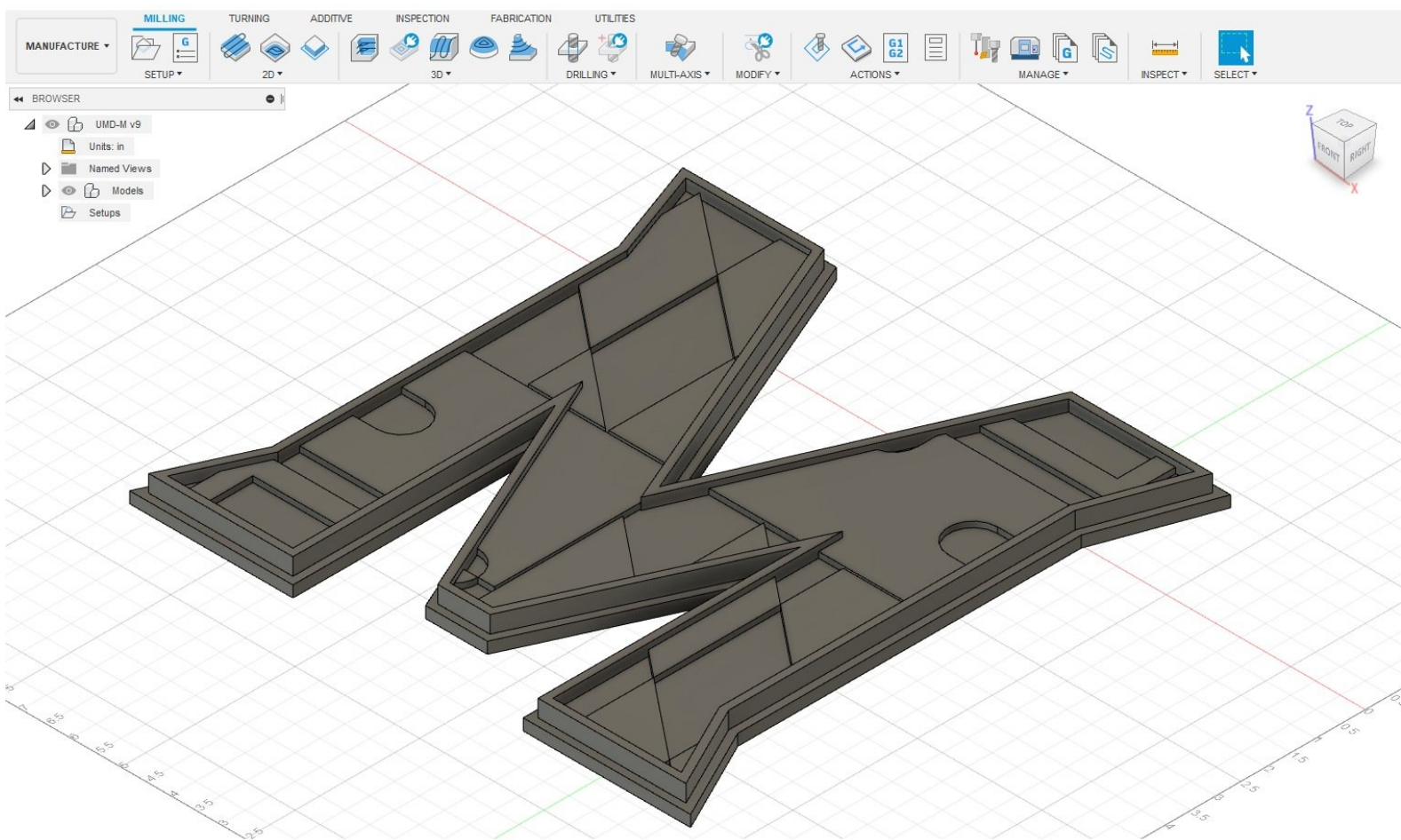


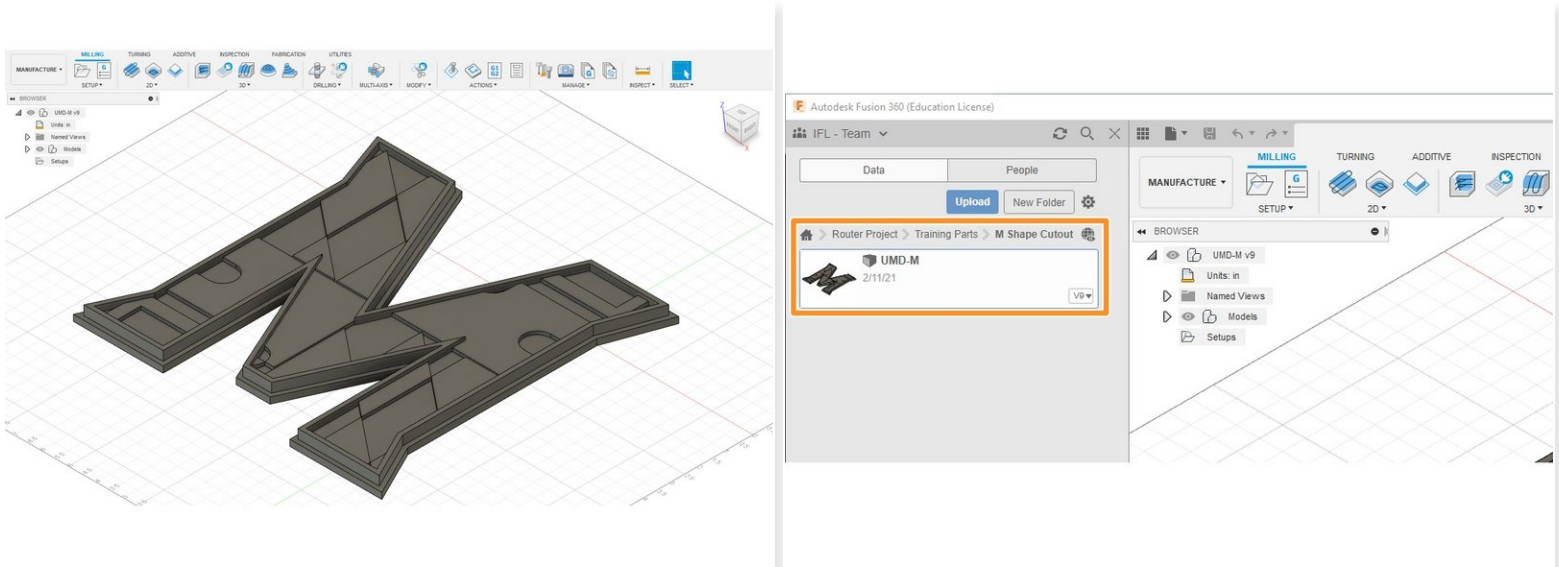


# Training Part 1.0 - UMD\_M Introduction

Written By: Kenny Davis Jr



## Step 1 — Introduction and Files



- The first part of this three-part training series will be to CAM the "UMD M."
- This part can be accessed by going to the IFL - Team in Fusion 360. The following directory is "Router Project" > "Training Parts" > "M Shape Cutout."
- ❗ No CAD will be done with this part, just CAM.