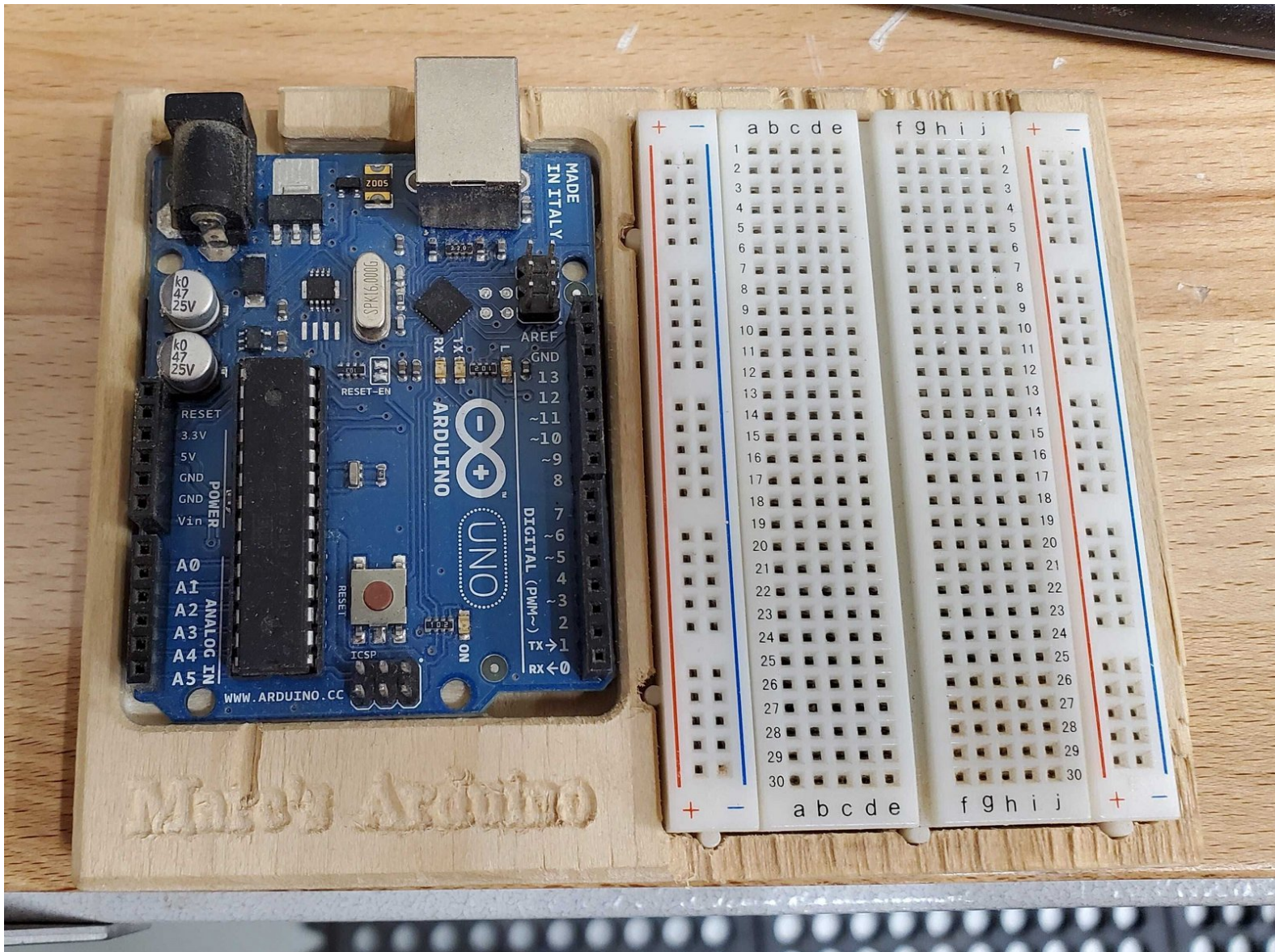




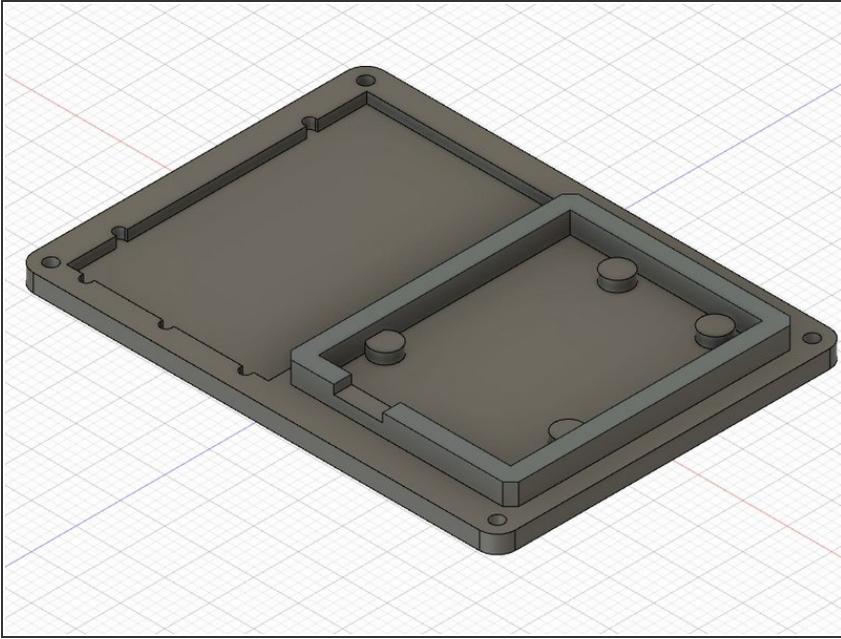
# Training Part 2.0 - Arduino Holder Introduction

Written By: Kenny Davis Jr



## Step 1 — Introduction and Files

---



- For the Arduino Breadboard Holder, you will CAD and CAM the part. The CAD drawing can be found in the upcoming dozukis.
- Upon the completion of this lab, a LM will go with you to physically CAM the part.