



Greasing

Ironworker greasing

Written By: Thong Minh Truong



Introduction

How to grease the Ironworker. Grease once daily before use.



TOOLS:

- [Safety Glasses](#) (1)
 - [Grease Gun](#) (1)
-

Step 1 — Safety Precautions



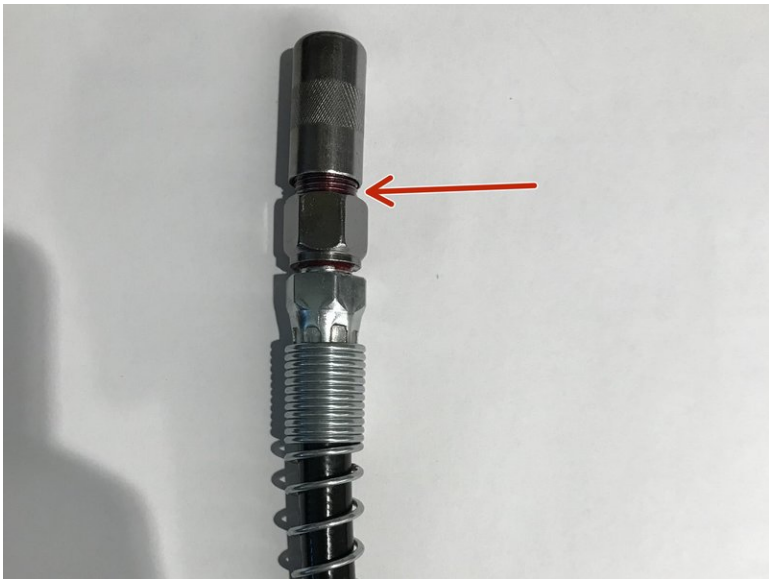
- Make sure E-Stop is engaged and power is off
- This panel can be found on the bottom left of the machine on the front side
- Put on safety glasses

Step 2 — Grease Gun Ring Lock



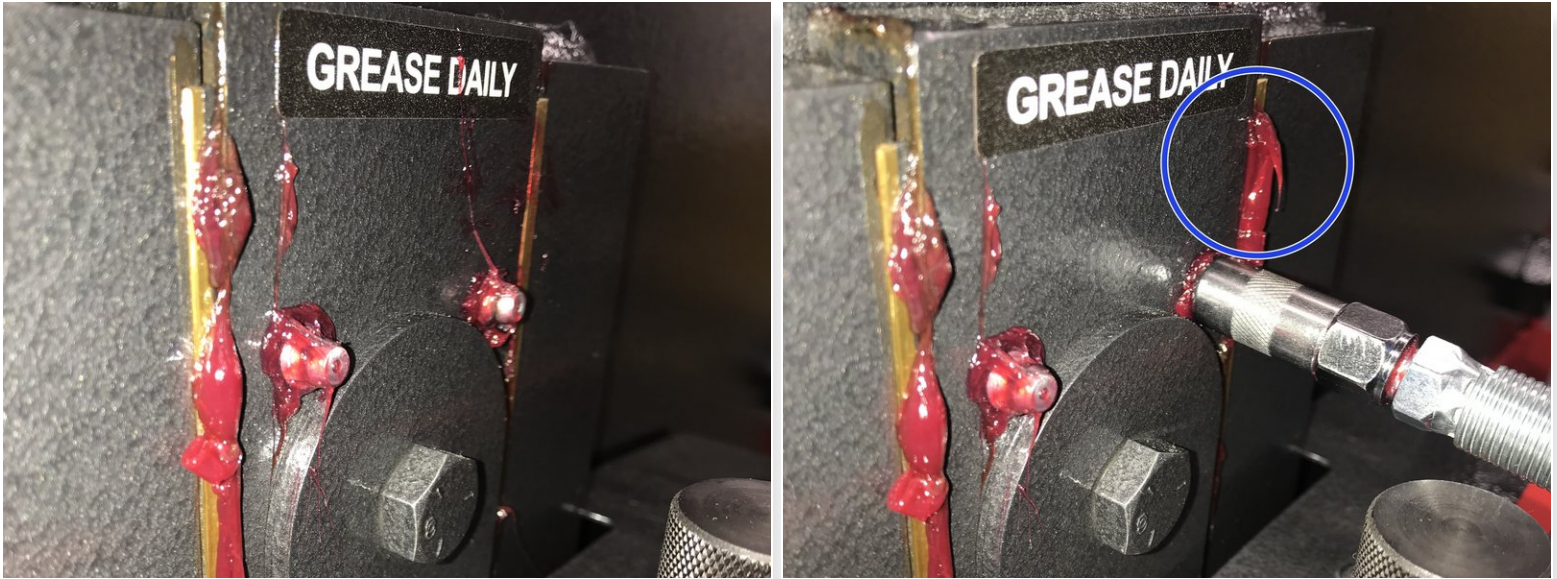
- The gun can be found in the yellow metal cabinet at the front entrance
- Remove ring lock on handle

Step 3 — Grease Gun Nozzle



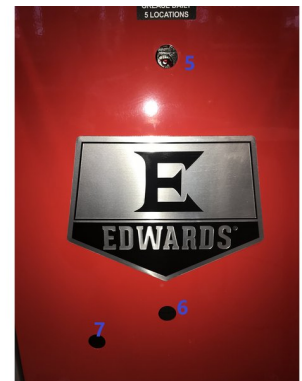
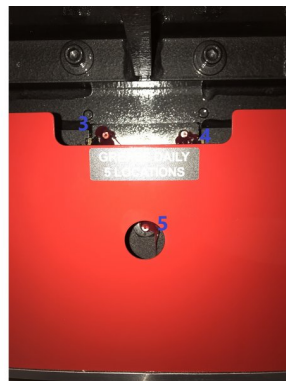
- Make sure everything on the nozzle is tightened as shown. No threads are visible.
- Second image shows correct setup

Step 4 — How to Grease



- Insert nozzle into place as shown. Make sure the nozzle is centered with the ball and is in completely.
- Pump the grease by gripping the handle together.
- Grease should flow out on the side with the blue circle.
- The amount shown is adequate, stop pumping when you reach this point

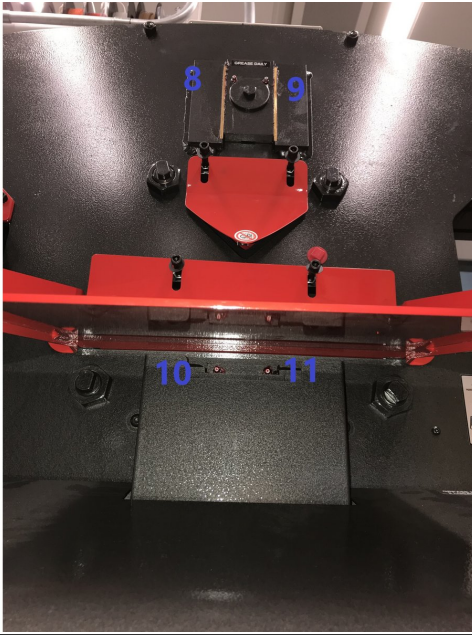
Step 5 — Front Greasing Locations



- 7 total places to grease in the front, numbered in blue

This document was generated on 2021-12-31 04:39:51 AM (MST).

Step 6 — Rear Grease Location



- 4 grease locations in the back, making 11 total for the entire machine
- Locations 10 and 11 are under the scrap tray.