



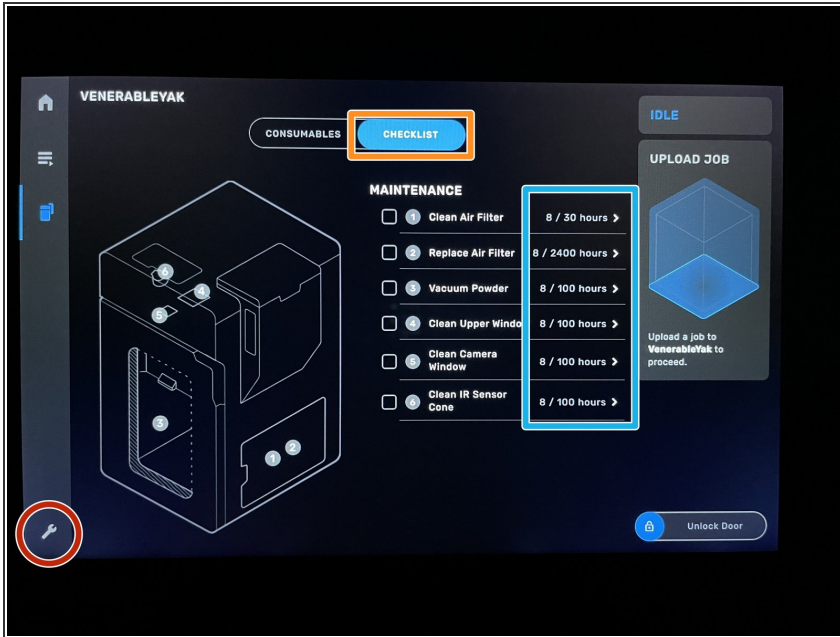
Maintenance Tasks

This guide will go over the several maintenance tasks that keep the Fuse operable.

Written By: Garrett Randolph Hinson

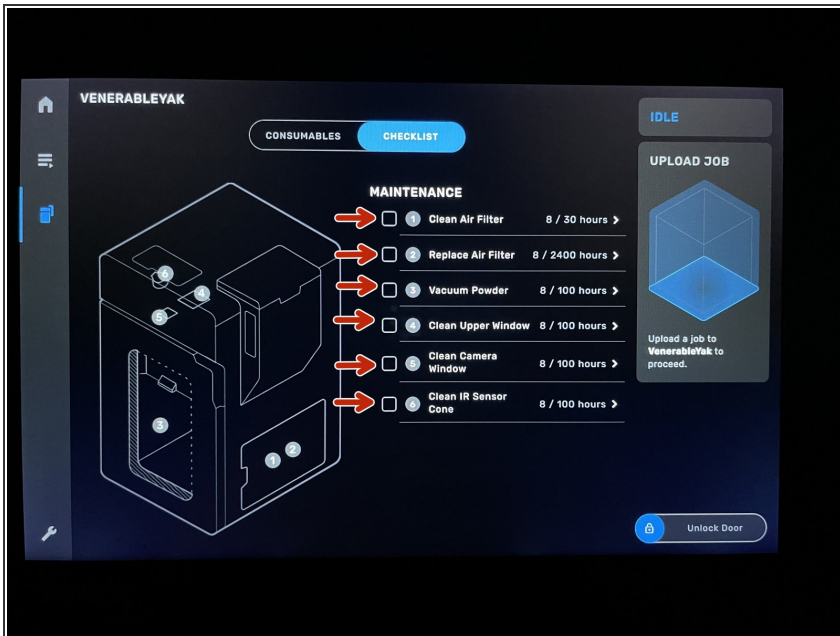


Step 1 — Accessing the Maintenance Checklist



- Tap the **settings** button on the left side of the Fuse touch screen.
- Tap **checklist**.
- The Maintenance Tasks will appear.
- Selecting a task to complete will give you step-by-step instructions on how to complete the task.
- The service interval for each task is displayed to the right of it.
- ★ Ensure you are wearing a pair of nitrile gloves before completing any tasks.

Step 2 — Maintenance Tasks



- There are 6 maintenance tasks to be completed.
 - Clean Air Filter.
 - Replace Air Filter.
 - Vacuum Powder.
 - Clean Upper Window.
 - Clean Camera Window.
 - Clean IR Sensor Cone.

i If any task is highlighted red, then it has exceeded its service interval and must be completed.

Step 3 — Clean Air Filter



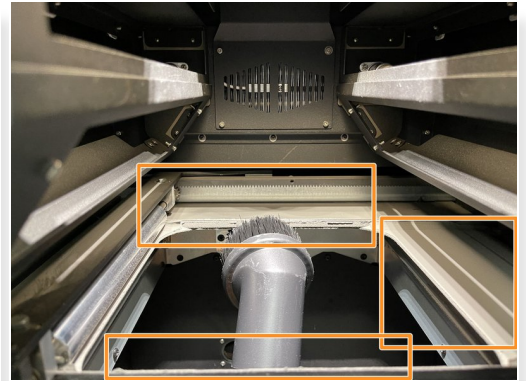
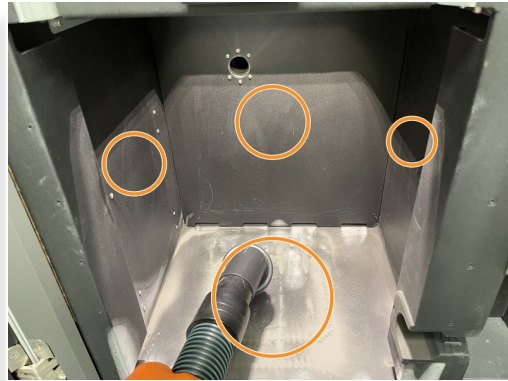
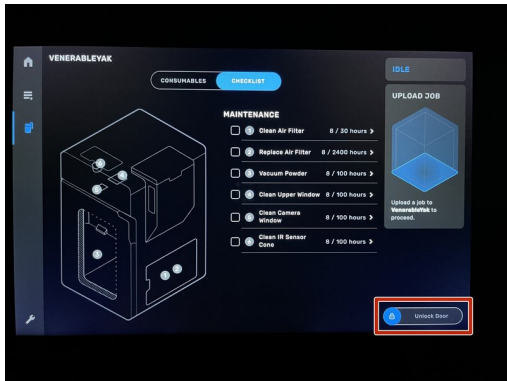
- Select **Clean Air Filter**. Select **begin**.
- Open the **air filter access door on the right** side of the Fuse.
 - Press **down** on the button to open the door.
- Grab the vacuum hose from the post-processing station and attach the brush-head.
 - Turn on the vacuum by pressing the "VAC" button on the Fuse post-processing station.
- Very **carefully** vacuum the **air filter** and surrounding debris from the chamber.
 - Be sure not to forget to vacuum down the access door as well.
- Select **done** to complete the task.

Step 4 — Replace Air Filter



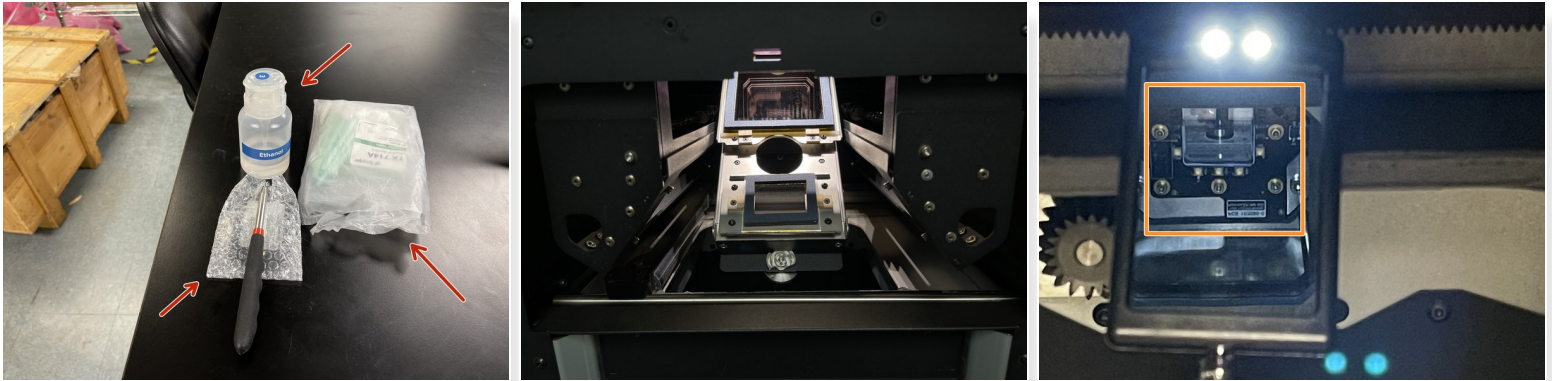
- Select **replace air filter**. Select **begin**.
- Open the **air filter access door on the right** side of the Fuse.
- Clean the **air filter**. *reference step 3.
- Depress the **spring clamp** to release the air filter.
- Pulling on the **grey tabs**, pull the air filter out.
- Grabbing a new air filter, replace in the same position as the old one.
- Replace the spring clamp to lock the new air filter into place.
- Close air filter door. Select done.

Step 5 — Vacuum Powder



- Using the **"Unlock Door"** button on the Fuse touch screen, open the door.
- If the build chamber is inserted, remove it and place it in the Fuse post-processing station.
- Grab the vacuum hose from the post-processing station and attach the brush-head.
- Vacuum out any accumulated powder from the **bottom, side, and top of the printer**.
- Close door. Select done.

Step 6 — Clean Upper Window

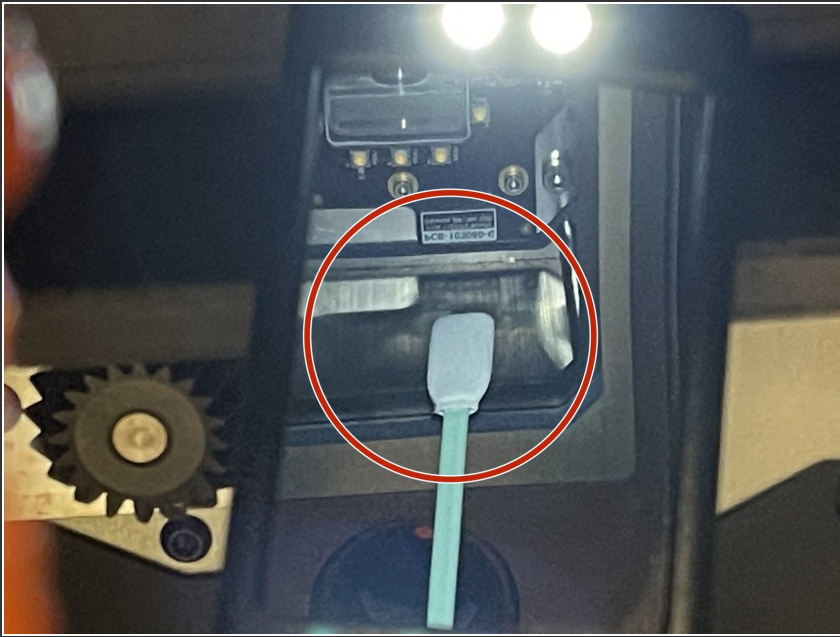


- Grab a swab, the mirror, and ethanol from the cabinet below the Fuse.

⚠ The LEDs inside the Fuse chamber are very bright. Following the guide on the Fuse will automatically dim them for you.

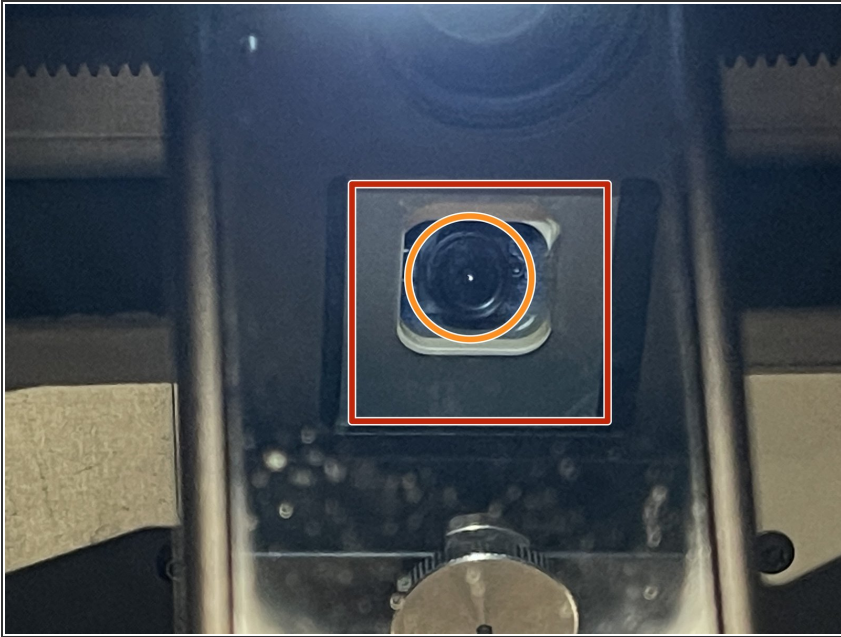
- Loosen the screw to drop the optical cassette tray and remove the optical cassette. *reference Fuse printing Dozuki.
- Once the optical cassette is removed, return the tray to the UP position.
- Using the mirror wand, located the upper window. It will be towards the rear.
 - ⓘ The mirror wand will have a switch on the back of it to turn on its LEDs.
- Once you have located the upper window, wet the foam swab with ethanol.

Step 7 — Clean Upper Window



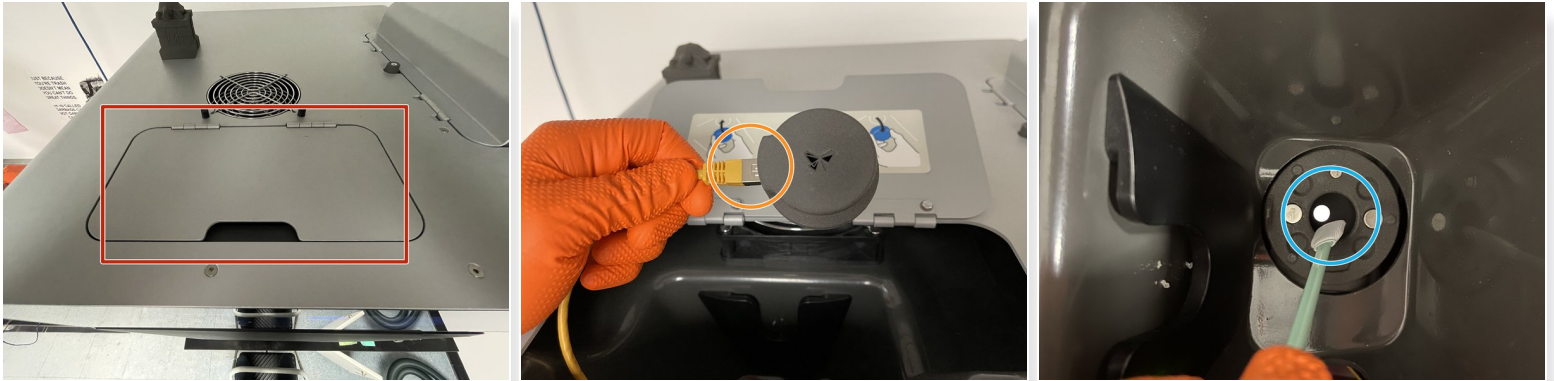
- Wipe around the silver side walls of the upper window in a single direction.
- Repeat with a new swab if necessary to remove any streaks.
- Replace the optical cassette.
- Close door. Select done.

Step 8 — Clean Camera Window



- Grab a swab, the mirror, and ethanol from the cabinet below the Fuse.
- Using the "Unlock Door" button on the Fuse touch screen, open the Fuse door.
- Remove the optical cassette and return tray to the UP position.
- Using the mirror wand, locate the camera window.
- Wet a foam swab with a small amount of ethanol.
- Wipe across the lens of the camera in a single direction multiple times.
- Once the ethanol has evaporated, complete a visual inspection to ensure the lens is clean. Repeat cleaning if necessary.
- Replace optical cassette. Close door. Select done.

Step 9 — Clean IR Sensor Cone



- Grab a foam swab and ethanol from the cabinet below the Fuse.
- Using a step stool, locate the IR sensor access door on top of the Fuse.
- Pulling on the IR sensor, remove it from its mount and unplug the yellow ethernet cable.
- Set the IR sensor off the side on a flat surface.
- Wet a foam swab with a small amount of ethanol.
- Begin wiping the inside of the IR sensor cone.
- Visually inspect the cone of any excess debris. Repeat cleaning if necessary.
- Reattach the ethernet cable and replace the IR sensor. It will illuminate green if seated properly.