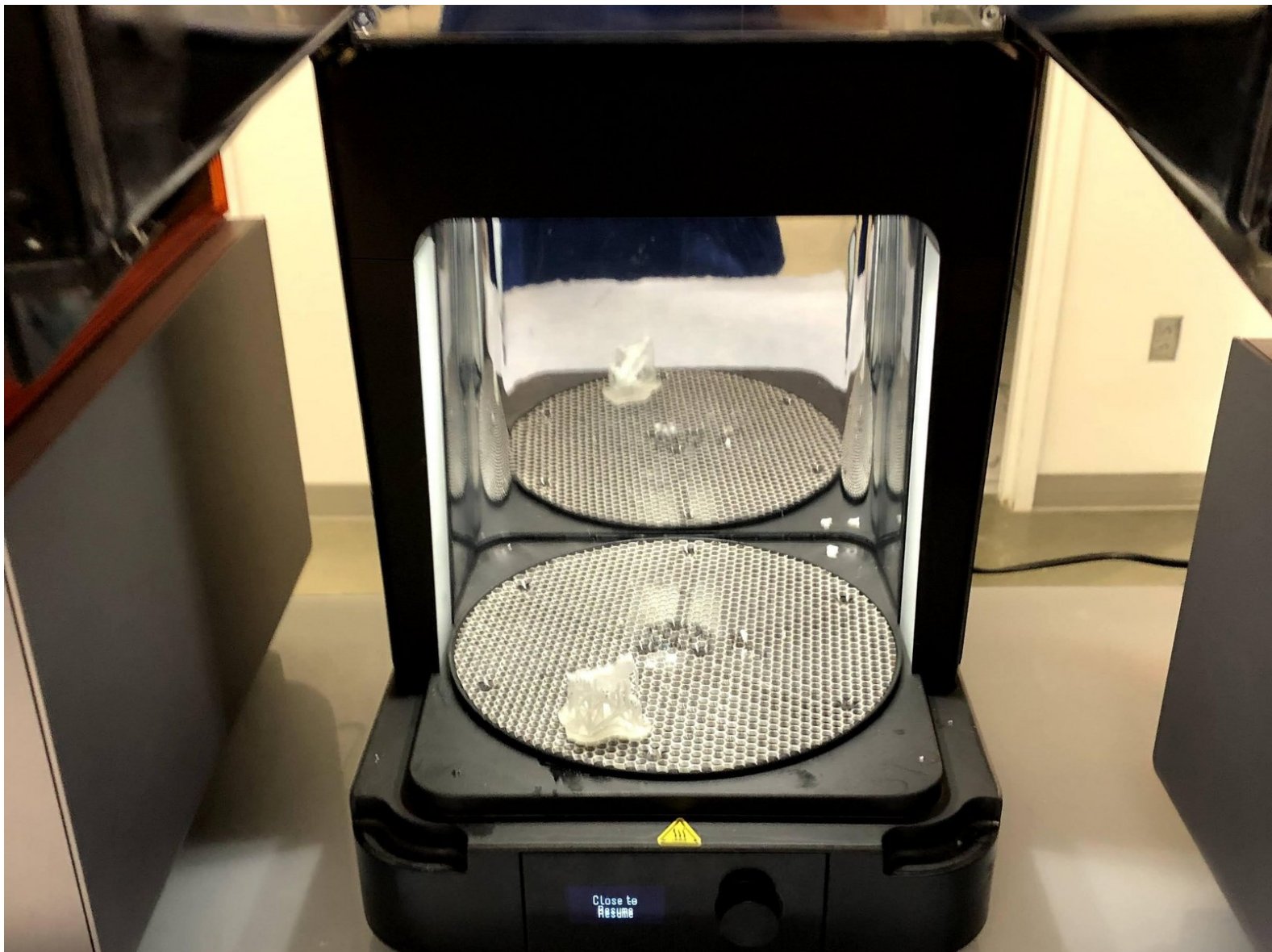




[DEPRECATED] Formlabs Form 2: Wash and Cure Station

This guide will explain the process of using the wash and cure stations to wash and cure prints for the formlabs printers.

Written By: Robert Nicholas Cozzette



Introduction

This guide will explain the necessary steps to properly harvest and cure a print from the Formlabs Form 2

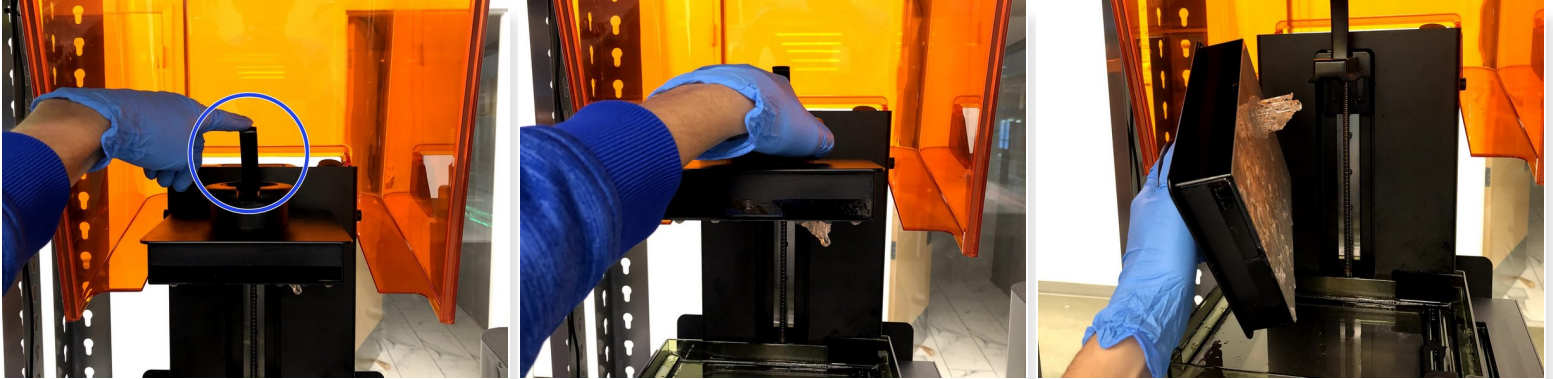
Images by: Terrapin Works



TOOLS:

- [Safety Glasses](#) (1)
 - [IPA Bottle](#) (1)
 - [Nitrile Gloves](#) (1)
 - [Side Cutter](#) (1)
 - [Ultrasonic Cutter](#) (1)
-

Step 1 — Removing the Build Platform



⚠ Wear gloves to prevent getting resin on your skin

- Once the print is complete, lift up orange hood and flip up the black clip holding down the build plate
- Pull the build plate straight out rotate to prevent dripping
- Flip the black clip back down and bring down the orange hood

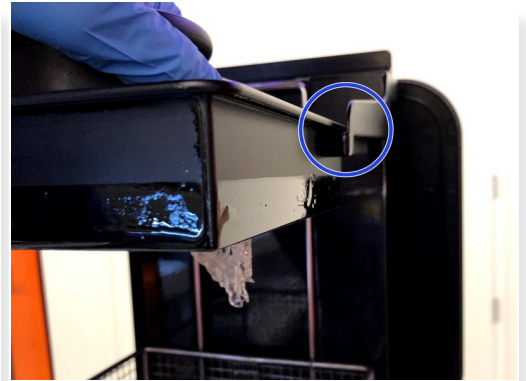
⚠ Do this immediately, ambient light can affect the resin sitting in the tank

Step 2 — Rinse Part and Platform with IPA



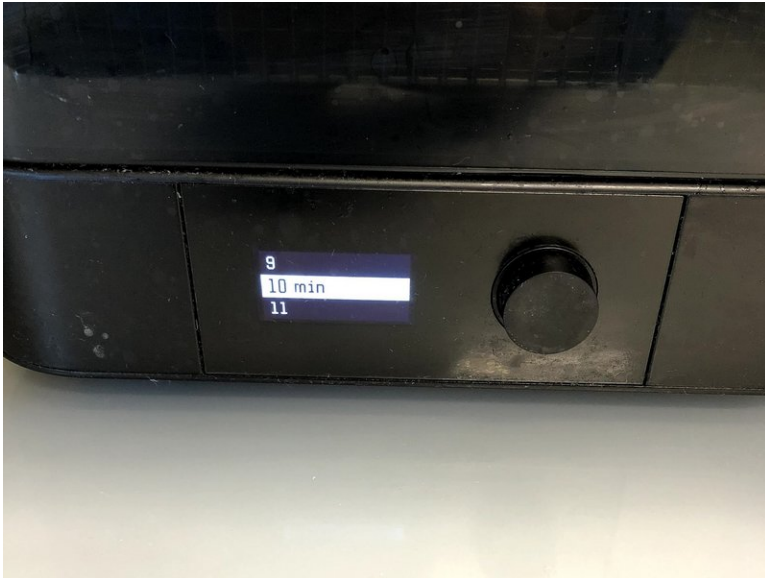
- Hold the build plate over a trash can
- Spray part down with IPA wash bottle
- Make sure to spray small crevices and holes where resin may have built up

Step 3 — Form Wash Usage



- ❗ The Form Wash will rinse the part of any excess resin
- Press the black button to turn on the wash
- Scroll to "open"
- Push the black button again to raise the arm
- Place the build platform on the arm with the model facing down
 - Build platform should slot nicely into tracks of the wash

Step 4 — Setting Wash Time



- Use the knob to scroll down to time and make sure the correct time is selected
 - ① If you're unsure about how long to set it for you can check [here](#)
- Scroll up to start and press the knob

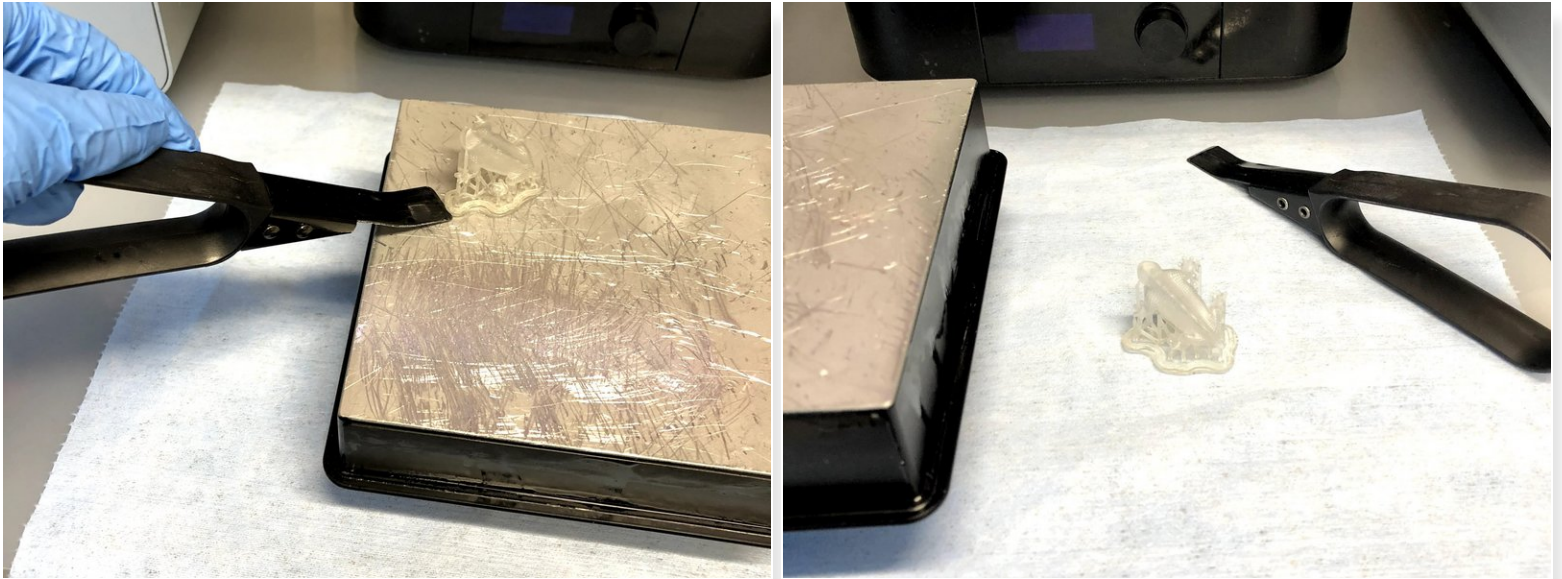
Step 5 — Form Wash Continued



- The arm and build plate will automatically rise out of the wash when the time has finished
- Remove and rotate the build plate so that the part is upright
- Scroll to "sleep" on the Form Wash and push the black button to set the tank to sleep

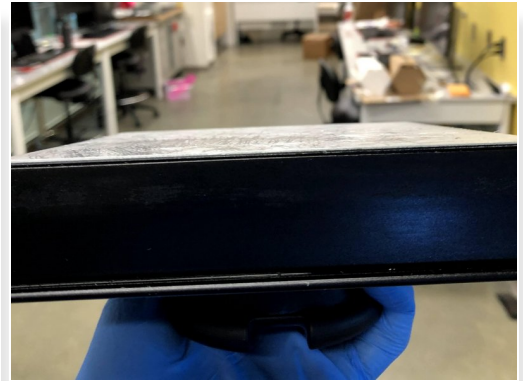
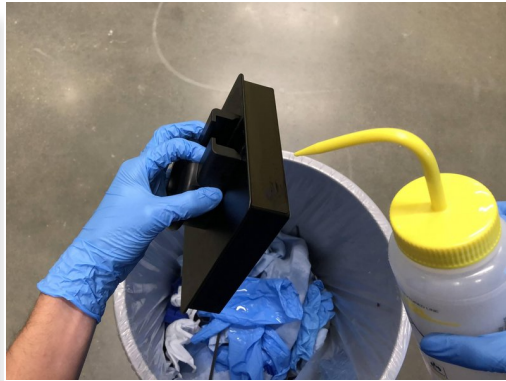
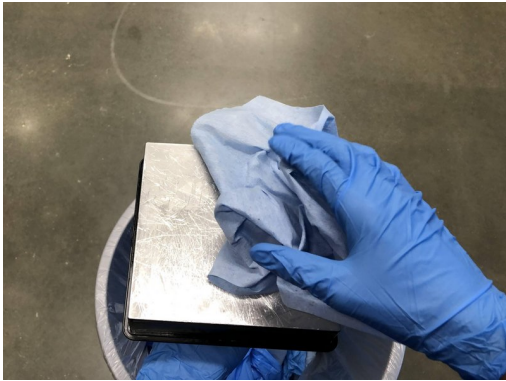
⚠ Do not keep the Form Wash open too long or the IPA inside the Wash will evaporate

Step 6 — Removing the Part from the Build Plate



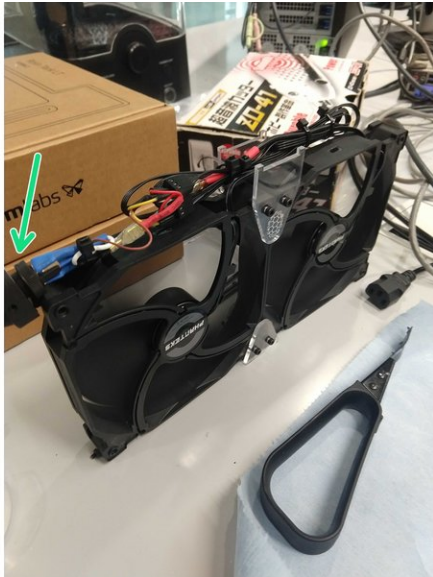
- Do another quick rinse of the part with IPA over a trashcan
- Place the upside down build plate on a towel
- Use the lever tool to loosen the raft from the build plate
 - ⚠ Be careful not to scratch the build plate! This tool is meant to be placed under the raft and then rotated so that the part pops off
- Place the removed part on a paper towel to begin drying

Step 7 — Cleaning the Build Platform



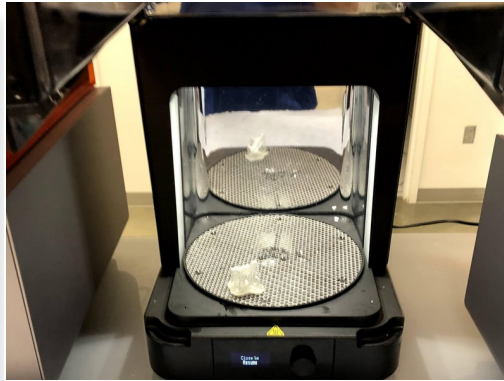
- Spray down paper towel with IPA and thoroughly wipe off the build surface
- Using a new side of the paper towel clean the sides of the build plate
- Wipe off build platform with a clean side of a final time to ensure that all resin is removed from the plate
- Replace build plate back into the machine

Step 8 — Drying



- Leave part out on paper towel and set to dry
 - The part must be completely dried so this will take some time, check to see if part is dry every 15 minutes
 - ⓘ If part does not dry after substantial amount of time, place the part in the metal basket of the form wash and run another wash cycle
- ⚠ **Part MUST be completely dry because any leftover resin will set unevenly resulting in a poor surface finish**
- In order to speed up drying times, there is a selection of drying techniques.
 - The part can be placed in front of a fan to ensure consistent airflow over the part
 - The part can be sprayed with compressed air to speed up drying times

Step 9 — The Cure Usage



- Preheat the form cure for the correct time and temperature for the resin
 - For a list of times and temps check [here](#)
- Open the lid and place **completely** dried parts on the circular plate
 - ⚠ Parts **MUST** be completely dried before curing or else the surface finish will be ruined
- Wait for the curing cycle to complete
- ① Multiple parts can have the same curing temperature but different times, so parts can go together, just set the time to the longest of the group