

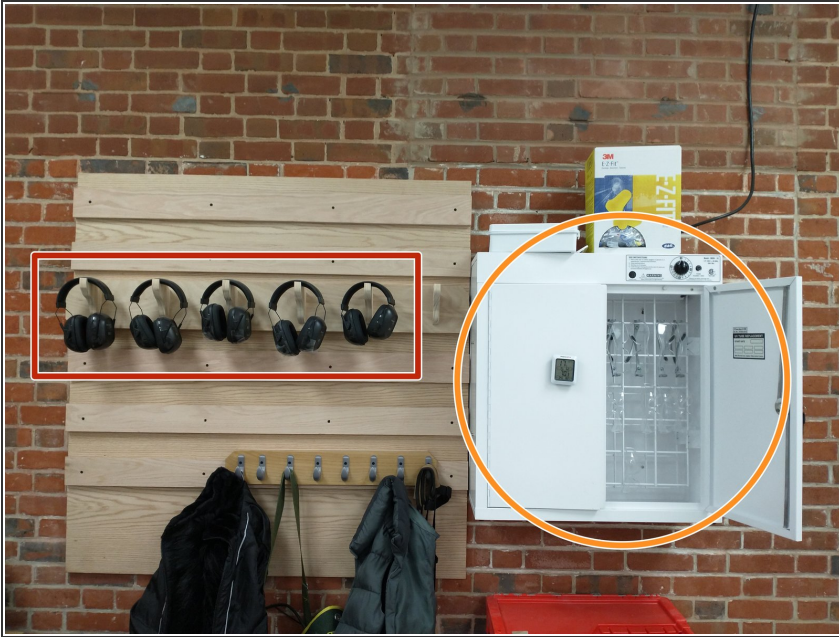


Domino Joiner

Written By: Sarah Rosalinde Schaupp



Step 1 — Domino Joiner



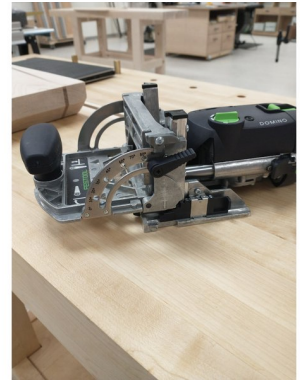
- Safety goggles are required to work in the woodshop.
- Ear protection is encouraged, but not required.

Step 2 — Dress Code



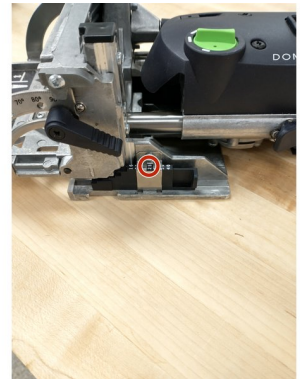
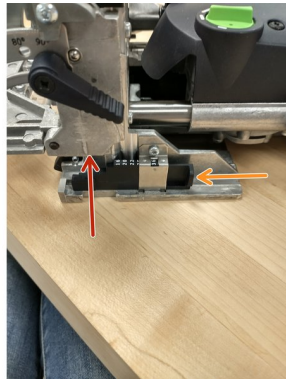
- Long pants and short sleeves are required.
- NO GLOVES - they can get caught in the machinery
- Closed toed shoes are required

Step 3 — Setting the Angle



- Turn the lever shown
- Push the large knob until the head reaches the desired angle.
- Most cuts will be made at 90 degrees, as this allows you to reference the top of your workpiece.

Step 4 — Setting the Height



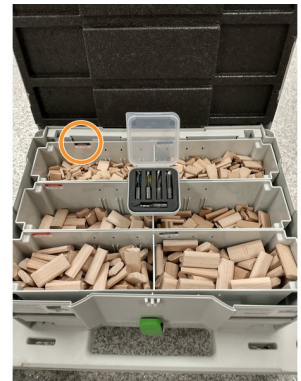
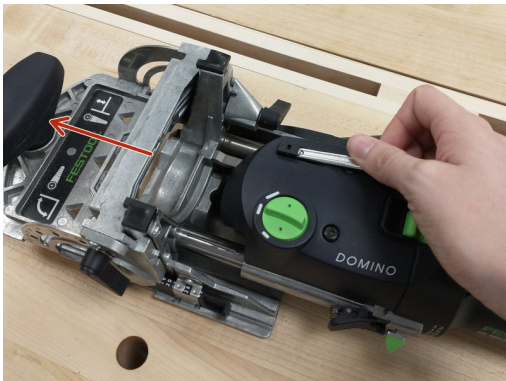
- Rotate the lever shown, then push up the head.
- Push in the stepped bar until the desired height in millimeters is highlighted.
- ① A good rule of thumb is to set the height to half of the thickness of the peice.

Step 5 — Setting the Domino Width



- WITH THE MACHINE ON, turn the knob to the desired domino width.

Step 6 — Changing the Bit



- Use one of the provided wrenches to pop the button out, then pull the head off of the machine.
- Press the lock button and use the wrench to unscrew the bit.
- Choose a new bit that corresponds to your chosen domino size, labeled on the box.
- Make sure to double check the size engraved on the bit to avoid any hole size mistakes.

Step 7 — Making Domino Holes



- Hold the front knob and align the machine where you want a hole.
- Depress the lever shown and push the handle of the machine into the head.
- Make sure to keep a steady stance to avoid a messy hole.

Step 8



- Keep steady pressure on the front knob as the joiner is cutting to keep it from moving.