



Big Band Saw

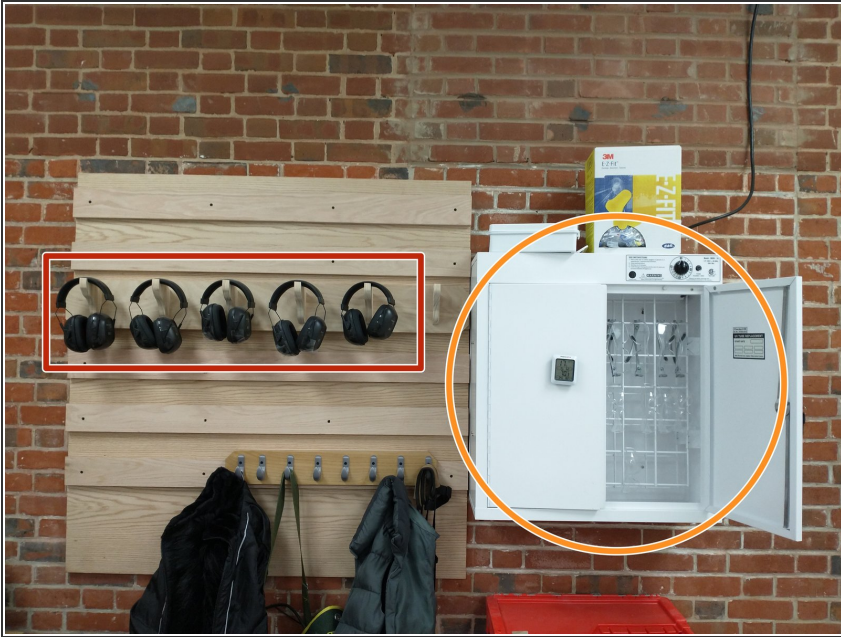
Written By: Sarah Rosalinde Schaupp



Introduction

The larger of the band saws is used for longer pieces that would not fit on the tablesaw.

Step 1 — PPE



- Safety goggles are required to work in the woodshop.
- Ear protection is encouraged, but not required.

Step 2 — Dress Code



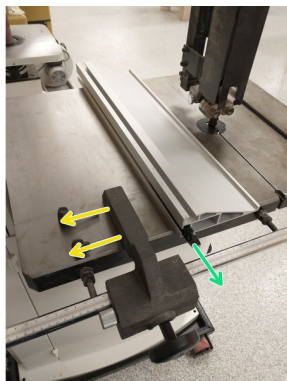
- Long pants and short sleeves are required.
- NO GLOVES - they can get caught in the machinery
- Closed toed shoes are required

Step 3 — Setting the Blade Guard



- To move the blade guard, you must turn the lock knob situated on the back of the bandsaw.
- Then turn the larger wheel until the blade guard is at the desired height.
- As a rule of thumb, the blade guard should be as close to your piece as possible.

Step 4 — The Fence




- Turn the knob at the front of the bandsaw to loosen the fence. It can then be moved to the desired position.
- The fence can be flipped up to give more surface area.
 - Unscrew the locking bolts
 - Pull off the retaining bar and slot it into the vertical slot, then screw the bolts back in.

Step 5 — Making a Cut



- To turn the machine on, press the green button. To turn it off, press the red button.
- Line up the fence by measuring the desired cut width from the blade to the fence.
- ☑ When marking, remember to take into account the width of the blade.

 **Banned materials: Metal, PVC, carbon fiber composites**

Step 6 — Technique



- Apply force towards the fence in addition to a forward force. This will ensure the cut does not curve.
- Move the board at a steady pace. Jerking can cause uneven cuts.
- For particularly long boards, it is good to have someone else catch the outfeed.