



# X1-Carbon Additional Tips

Written By: Ben Hroblak



## Introduction

The Bambu Lab X1-Carbon has a few extra features compared to other Bambu Lab printers. This guide will introduce the user to the touch screen, build plates, and the AMS stack.

## Step 1 — Home Tab



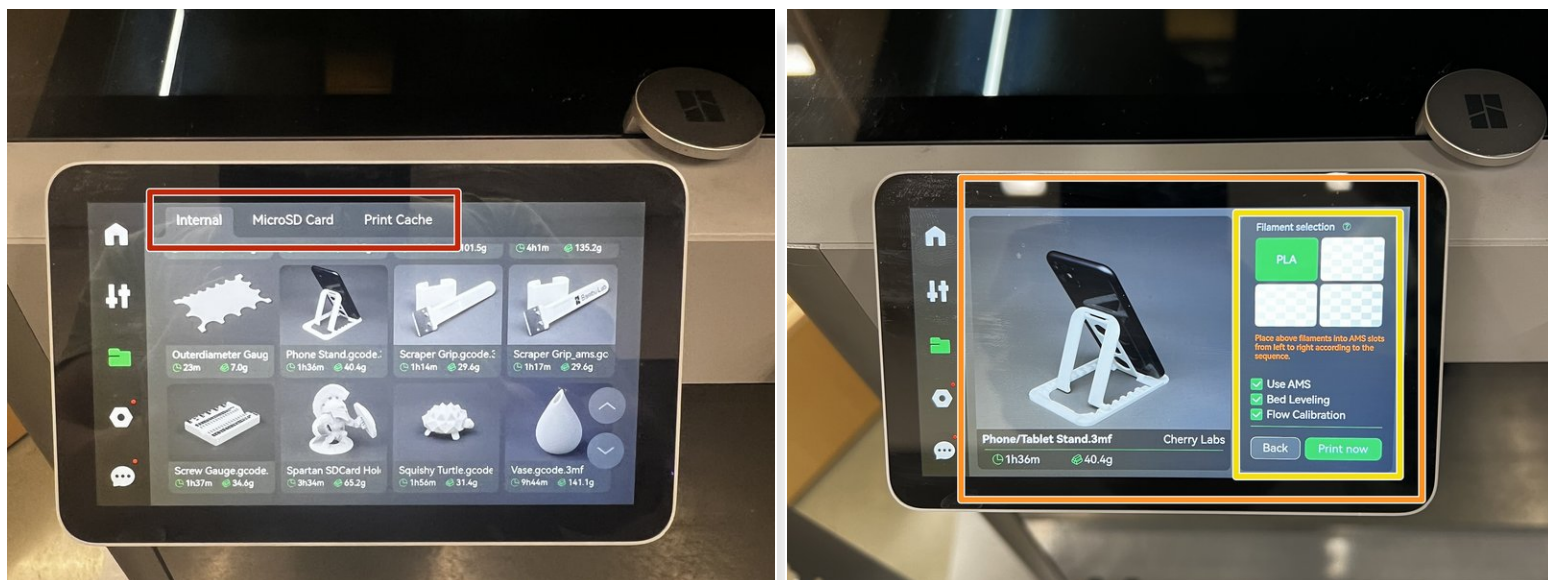
- The touch screen allows you to modify settings before or during a print job.
- Temperature/axis settings, print library, and additional settings can be found by tapping the tabs on the left.

## Step 2 — Temperature/Axis Tab



- In the Temperature/Axis header, various temperatures can be changed and motors can be jogged.
- Use the circle to jog the X and Y motors.
- The bed can be raised/lowered, and the extruder can move filament using the buttons on the right.
- Tapping on any temperature on the left will bring up a keypad to enter in a new number.
- Tapping the speed button allows the user to choose between Silent, Standard, Sport, and Ludicrous speed modes.
- Fan speed settings can be changed at the bottom, but these are best left unchanged.

## Step 3 — Files Tab



- The Files tab allows the user to start prints from the machine.
  - The tabs at the top display printable files from internal, microSD, and cache storage locations.
  - Tapping on a model will bring up a menu with information about the print job.
  - On the right the user can select the desired filament from the AMS systems and start the print. Additional boxes allow the user to select calibration options.
- ⓘ This menu will not be used much. Most models will be uploaded from the slicer.



## Step 4 — AMS Stack



- The AMS stack is located above the X1-Carbon.
- Both AMS modules can be opened to insert/remove filament spools.
- Consult [this guide](#) for more information on using the AMS modules.